



# Teradata Dynamic Query Manager User Guide

Release 05.01.00

B035-2497-093A  
September 2003

---

The product described in this book is a licensed product of NCR Corporation.

Adobe, the Adobe logo, Acrobat, and Acrobat Exchange are registered trademarks of Adobe Systems, Inc.

Asymetrix and ODBC™ are registered trademarks of Microsoft Corporation.

BYNET and YNET are trademarks of NCR Corporation

DBC/1012 and TERADATA are registered trademarks of NCR International, Inc.

IBM, PC AT, and PS/2 are trademarks or registered trademarks of International Business Corporation in the U.S. and other countries.

Bridge Runtime and Bridge Tool Kit are trademarks of Softbridge Ltd.

ETHERNET and XNS are trademarks of Xerox Corporation.

ISO is a trademark of International Standards Organization.

MICROSOFT, MS, OS/2, DOS/V, WINDOWS NT™ and WINDOWS 2000 are registered trademarks of Microsoft Corporation.

Presentation Manager is a trademark of Asymetrix, Inc.

ToolBook is a registered trademark of Asymetrix, Inc.

TCP/IP protocol is a Department of Defense Standard ARPANET protocol.

UNIX® is a registered trademark of The Open Group.

Visual Basic is a registered trademark of Microsoft Corporation.

Visigenic™ and the Visigenic logo are trademarks of Visigenic Software, Inc.

WinCLI and BTEQ are trademarks of NCR Corporation.

X/Open and the X device are trademarks of X/Open Company Limited.

**THE INFORMATION CONTAINED IN THIS DOCUMENT IS PROVIDED ON AN "AS-IS" BASIS, WITHOUT WARRANTY OF ANY KIND, EITHER EXPRESS OR IMPLIED, INCLUDING THE IMPLIED WARRANTIES OF MERCHANTABILITY, FITNESS FOR A PARTICULAR PURPOSE, OR NON-INFRINGEMENT. SOME JURISDICTIONS DO NOT ALLOW THE EXCLUSION OF IMPLIED WARRANTIES, SO THE ABOVE EXCLUSION MAY NOT APPLY TO YOU. IN NO EVENT WILL NCR CORPORATION (NCR) BE LIABLE FOR ANY INDIRECT, DIRECT, SPECIAL, INCIDENTAL OR CONSEQUENTIAL DAMAGES, INCLUDING LOST PROFITS OR LOST SAVINGS, EVEN IF EXPRESSLY ADVISED OF THE POSSIBILITY OF SUCH DAMAGES.**

The information contained in this document may contain references or cross references to features, functions, products, or services that are not announced or available in your country. Such references do not imply that NCR intends to announce such features, functions, products, or services in your country. Please consult your local NCR representative for those features, functions, products, or services available in your country.

Information contained in this document may contain technical inaccuracies or typographical errors. Information may be changed or updated without notice. NCR may also make improvements or changes in the products or services described in this information at any time without notice.

To maintain the quality of our products and services, we would like your comments on the accuracy, clarity, organization, and value of this document. Please e-mail: [teradata-books@lists.ncr.com](mailto:teradata-books@lists.ncr.com)

or write:

Information Engineering  
NCR Corporation  
17095 Via Del Campo  
San Diego, California 92127-1711  
U.S.A.

Any comments or materials (collectively referred to as "Feedback") sent to NCR will be deemed non-confidential. NCR will have no obligation of any kind with respect to Feedback and will be free to use, reproduce, disclose, exhibit, display, transform, create derivative works of and distribute the Feedback and derivative works thereof without limitation on a royalty-free basis. Further, NCR will be free to use any ideas, concepts, know-how or techniques contained in such Feedback for any purpose whatsoever, including developing, manufacturing, or marketing products or services incorporating Feedback.

**Copyright © 2001-2003, NCR Corporation  
All Rights Reserved**

# Preface

## Purpose

The Teradata® Tools and Utilities are a group of products designed to work with the Teradata Database. This user guide describes Teradata Dynamic Query Manager, and the client components and features. Teradata DQM allows you to schedule SQL requests to a DQM Scheduled Requests server, and view information about your scheduled jobs.

Teradata DQM lets the Teradata database administrator (DBA) manage and regulate networked access to the Teradata Database.

## Supported Releases

This book supports the following releases:

- Teradata Database V2R5.1
- Teradata Tools and Utilities 07.01.00
- Teradata DQM 05.01.00

Teradata DQM 05.01.00 supports V2R5.1.

Teradata DQM 05.00.00 only supports Teradata V2R5 or later. Teradata DQM 04.03.00 supports Teradata V2R4.1 or V2R4.2.

## Changes to This Book

The following changes were made to this book to support the current release:

Date/Release	Description
September 2003/ 07.01.00	Changed TDQM version from 5.0 to 5.1.
	TDQM Administrator now provides a monitoring capability for delayed queries, such that the display is automatically updated rather than requiring the user to go through a sequence of menu selections to obtain a new set of delayed query information.
	Changed error log format to remove the date, since files are now date-specific.
	Removed the automatic invocation of the Connect dialog box in the Scheduled Request Viewer application, as failures to connect cause the main viewer dialog box to invoke.
	Added a DQM Server ID to the Server Information Dialog box, General tab, so that the unique internal numeric identifier assigned to each TDQM server system is displayed.
	Added Refresh command to the TDQM Administrator View menu, so data is reloaded into all windows.

Date/Release	Description
	Added Cleanup command to the TDQM Administrator main window to remove database objects that no longer exist, and then refresh all windows.
	Added the ability to save large objects into results tables and files and support for large objects when scheduled requests include large objects.
	<p>Updated the Job List in the Scheduled Requests Viewer so that when the current job is "failed," the Information field maps one of the following states to the general job failure status.</p> <ul style="list-style-type: none"> <li>• Existing results could not be dropped</li> <li>• Server down</li> <li>• System error</li> <li>• Error on drop results</li> <li>• Error on open results</li> <li>• Error on write results</li> </ul>
	Windows 98 for Client components no longer supported.
December 2002/ 07.00.00	Teradata Dynamic Query Manager is abbreviated as Teradata DQM or DQM. Occasionally, you may see it abbreviated as TDQM when referring to elements in the user interface.
	The word "restriction" has been replaced by "rule."
	Generate an e-mail notification when a scheduled request has completed.

## Audience

This book is for Teradata DQM users. Database administrators using Teradata DQM to manage users' requests sent to the Teradata Database may find it helpful. You should have a good understanding of the Teradata Database and be familiar with Microsoft® Windows®.

## Prerequisites

This book is a user guide and requires no prerequisite reading. You should be familiar with:

- Basic concepts of the Teradata Database
- Relational database management systems
- Teradata SQL
- Connectivity software, such as ODBC and CLIV2

## Product Related Publications

The publications that support the DQM product are listed below. In the following table, the *mmyx* represents the publication date, where *mm* is the month, *y* is the last digit of the year, and *x* is an internal publication code.

B035-2496- <i>mmyx</i>	<i>Teradata Dynamic Query Manager Administrator Guide</i>
B035-2509- <i>mmyx</i>	<i>ODBC Driver for Teradata User Guide</i>
B035-2428- <i>mmyx</i>	<i>Teradata Manager User Guide</i>
B035-2430- <i>mmyx</i>	<i>Teradata SQL Assistant for Microsoft Windows User Guide</i>

## Teradata Tools and Utilities Release Definition

The *Teradata Tools and Utilities Release Definition* gives you any additional information received late in the release process that may not have been included in this document.

You can also find a list of:

- Operating systems and Teradata Database versions that the Teradata Tools and Utilities release are certified to work with
- Product release version numbers
- Documentation that supports the current release
- Training and support centers

## Technical Information on the Web

For technical support, additional information, or the latest versions of Teradata publications, you may access online information through the following NCR Web sites:

<a href="http://www.info.ncr.com/">http://www.info.ncr.com/</a>	<p>A direct link to NCR Information Products Publishing library where you can view, download, or order technical documentation and CD-ROMs.</p> <p>You can also find a Documentation List link for each Teradata Tools and Utilities release. The Documentation List identifies all publications released in support of the current Teradata Database and the Teradata Tools and Utilities release.</p>
<a href="http://www.teradata.com">Teradata.com</a>	<p>The NCR home page provides links to numerous sources of information about Teradata. Among the links provided are sites that deal with the following subjects:</p> <ul style="list-style-type: none"> <li>• Technical support</li> <li>• Customer education courses</li> <li>• Case studies of customer experiences with Teradata</li> <li>• Third party industry analyses of Teradata data warehousing products</li> <li>• White papers</li> <li>• Online periodicals</li> </ul>

## List of Acronyms

The following acronyms are used in this book:

ASCII	American Standard Code for Information Interchange
DBA	Database Administrator
DBQM	Database Query Manager
DQM	short acronym for Teradata Dynamic Query Manager
EUC	Extended UNIX Code
ID	Identifier or Identification
JIS	Japanese Industrial Standards
ODBC	Open Database Connectivity
RDBMS	Relational Database Management System
SQL	Structured Query Language
TDQM	Teradata Dynamic Query Manager

# Contents

---

## Preface

Purpose .....	i
Supported Releases .....	i
Changes to This Book .....	i
Audience .....	iii
Prerequisites .....	iii
Product Related Publications.....	iii
Teradata Tools and Utilities Release Definition.....	iii
Technical Information on the Web.....	iv
List of Acronyms .....	iv

---

## Chapter 1:

### Product Overview

Introduction.....	1-2
What is DQM?.....	1-2
DQM Client Software Components.....	1-3
Teradata DQM Scheduled Requests Operations Utility .....	1-3
Teradata DQM Scheduled Requests Viewer Application .....	1-3
DQM Architecture.....	1-4
Installation Information.....	1-5
Supported Client Platforms .....	1-5
Software Installation .....	1-5
Software Configuration .....	1-6
How to Specify Server Names.....	1-6

---

## Chapter 2:

### Scheduled Requests

Introduction.....	2-2
Execution Time Frames .....	2-2
Automatic Scheduling .....	2-2
Saving Result Data .....	2-3
Immediate Execution .....	2-3
Checking Submitted Requests.....	2-3
Dispatching Jobs .....	2-4

Executing Jobs .....	2-4
Character Sets.....	2-4
Automatic Cleanup .....	2-5
Scheduling SQL.....	2-5
Connecting to a DQM Server.....	2-6
How to Connect to a DQM Server .....	2-6
Scheduling an SQL Request.....	2-8
Submitting Scheduled Requests.....	2-9
How to Submit a Scheduled Request .....	2-9
Scheduling Requests Using Teradata SQL Assistant .....	2-13
How to Set Up Automatic Scheduling .....	2-13
Steps Your DBA Must Complete.....	2-13

---

**Chapter 3:**  
**Teradata DQM Scheduled Requests Viewer**

Introduction.....	3-2
Teradata DQM Scheduled Requests Viewer Main Window .....	3-3
Menu Bar.....	3-4
Toolbar .....	3-4
Status Bar .....	3-4
Sorting Columns .....	3-5
Viewing Scheduled Request Properties .....	3-6
How to View Scheduled Request Properties.....	3-6
Modifying Previous Requests.....	3-7
How to Modify a Previous Request and Submit .....	3-7
Deleting a Request.....	3-9
How to Delete a Request .....	3-9
Canceling or Deleting a Job.....	3-10
How to Cancel a Job .....	3-10
How to Delete a Job.....	3-10
Dropping Results.....	3-11
How to Drop Results.....	3-11
Retrieving Job Result Data .....	3-12
How to Retrieve Results From Server Text File .....	3-12
How to Retrieve Results From a Database Table.....	3-13
Viewing Job Result Information.....	3-14
How to View Job Result Information .....	3-14
Refreshing the Job List .....	3-15
How to Refresh the Job List .....	3-15
Setting the Refresh Rate.....	3-16
How to Set the Refresh Rate.....	3-16
Online Help and Copyright Information.....	3-17

Online Help .....	3-17
Copyright and Version Information .....	3-17
Disconnecting from a DQM Server .....	3-18
How to Disconnect from a DQM Server .....	3-18

---

**Chapter 4:**  
**Teradata DQM Scheduled Requests Operations Utility**

Introduction.....	4-2
Functions.....	4-2
Changing Configuration Parameters .....	4-3
How to Change the Communications Parameters .....	4-3
How to Change Client Parameters .....	4-4
Viewing Component Information.....	4-6
How to View Communications Information.....	4-6
Teradata DQM Error Log Files.....	4-7
How to View Error Log Files.....	4-7
How to Save Error Log Files .....	4-8
How to Delete Error Log Files .....	4-8
Enabling and Disabling Tracing.....	4-9
How to Enable and Disable Tracing .....	4-9
Teradata DQM Scheduled Requests Operations Menu Bar.....	4-10
File Menu .....	4-10
Configuration Menu .....	4-10
Server Menu .....	4-11
Information Menu .....	4-11
Error Log Menu .....	4-11
Help Menu.....	4-12

---

**Appendix A:**  
**Communications Component Information**

Communications Information .....	A-2
Parameters Tab .....	A-2
Connections Tab .....	A-3
Client Processes Tab.....	A-4
Statistics Tab.....	A-5

---

**Appendix B:**  
**Configuration Parameters and Error Log Files**

Default Configuration Parameters.....	B-2
TDQM Error Log Files .....	B-4

Component Field .....B-4  
Status Field .....B-5

---

**Glossary** .....Glossary-1

---

**Index**..... Index-1



## List of Figures

Figure 1-1	DQM Client/Server Architecture for Scheduled Requests.....	1-4
Figure 2-1	SQL Text Dialog Box .....	2-9
Figure 2-2	Teradata DQM Submit Scheduled Request Dialog Box.....	2-12
Figure 3-1	Teradata DQM Scheduled Requests Viewer Main Window .....	3-4
Figure 3-2	Sample Teradata DQM View Scheduled Request Dialog Box .....	3-6
Figure 4-1	Sample Error Log File .....	4-7
Figure 4-2	Teradata DQM Scheduled Requests Operations Menu Bar .....	4-10
Figure A-1	Comm. Information Dialog Box: Parameters Tab.....	A-2
Figure A-2	Comm. Information Dialog Box: Connections Tab.....	A-4
Figure A-3	Comm. Information Dialog Box: Client Processes Tab .....	A-5
Figure A-4	Information Dialog Box: Statistics Tab .....	A-6



# List of Tables

Table 1-1	Communications Parameters Dialog Box Field Descriptions.....	1-6
Table 2-1	Scheduled Requests Dialog Box: Field/Button Descriptions .....	2-10
Table 3-1	TDQM Scheduled Requests Viewer Column Descriptions.....	3-3
Table 4-1	Communications Parameters Dialog Box: Field Descriptions.....	4-4
Table 4-2	Client Parameters Dialog Box: Field Descriptions .....	4-5
Table 4-3	Scheduled Requests Operations: File Menu Command .....	4-10
Table 4-4	Scheduled Req. Operations: Configuration Menu Commands.....	4-10
Table 4-5	Scheduled Requests Operations: Server Menu Commands .....	4-11
Table 4-6	Scheduled Requests Operations: Information Menu Commands .	4-11
Table 4-7	Scheduled Requests Operations: Error Log Menu Commands.....	4-12
Table 4-8	Scheduled Requests Operations: Help Menu Commands .....	4-12
Table A-1	Information Dialog Box: Tab Descriptions .....	A-2
Table A-2	Information Dialog Box: Box Descriptions .....	A-3
Table A-3	Information Dialog Box: Connections Tab Field Descriptions .....	A-4
Table A-4	Information Dialog Box: Client Processes Tab Field Descriptions ..	A-5
Table A-5	Information Dialog Box: Statistics Tab Field Descriptions .....	A-6
Table B-1	Default Configuration Parameters.....	B-2
Table B-2	TDQM Log - Entry Fields.....	B-4
Table B-3	TDQM Log - Component Identifiers .....	B-5
Table B-4	TDQM Status Field - General Status Descriptions .....	B-5
Table B-5	TDQM Status Field - Communications Status Descriptions.....	B-6
Table B-6	TDQM Status Field - Server Vote Status Descriptions .....	B-6
Table B-7	TDQM Status Field - Server Rule Status Descriptions.....	B-7
Table B-8	TDQM Status Field - Server Exception Status Descriptions .....	B-7
Table B-9	TDQM Status Field - Scheduler Status Descriptions.....	B-8



  
**Chapter 1:**

# Product Overview

This chapter provides an overview of DQM and contains the following information:

- [Introduction](#)
- [DQM Client Software Components](#)
- [DQM Architecture](#)
- [Installation Information](#)
- [Software Configuration](#)

---

# Introduction

## What is DQM?

DQM lets your DBA manage access to and utilization of the Teradata Database. Managing database access increases database efficiency and workload capacity.

DQM manages database access and use by:

- examining logon and query requests, comparing the objects referenced in the requests to DBA-defined rules, and rejecting requests meeting the rules criteria. To learn more about these query management features, refer to the *Teradata Dynamic Query Manager Administrator Guide*.
- accepting single or multiple statement query requests for scheduled execution at a later time. Scheduled requests are also subject to restriction checking.

This user guide explains the scheduled requests capabilities of DQM which is provided to you when you install the Teradata DQM scheduled requests client software.

# DQM Client Software Components

DQM has the following client software components:

- Teradata DQM Scheduled Requests Operations
- Teradata DQM Scheduled Requests Viewer

## Teradata DQM Scheduled Requests Operations Utility

Teradata DQM Scheduled Requests Operations is a part of the DQM scheduled requests client software. You can use it to:

- Configure the scheduled requests client environment on your PC
- View information about client parameters, connections, processes, and statistics
- Examine DQM error log files

Your DBA uses this utility to configure and monitor the Teradata DQM Scheduled Requests client and server components.

## Teradata DQM Scheduled Requests Viewer Application

DQM provides an application for Windows from which you can manage your scheduled requests. The Teradata DQM Scheduled Requests Viewer allows you to:

- Submit new requests
- Create a new request by modifying the attributes of existing requests.
- Cancel the scheduled execution of selected jobs
- Delete a job and the scheduled request will still be available in the system if you scheduled it to run daily, weekly, or monthly
- Delete requests so all jobs associated with that request are also deleted
- Drop the results table or file associated with selected requests
- Retrieve job results data using Teradata SQL Assistant
- Clean up (drop) results tables and files
- View the status of jobs
- View information about schedule request properties for a job

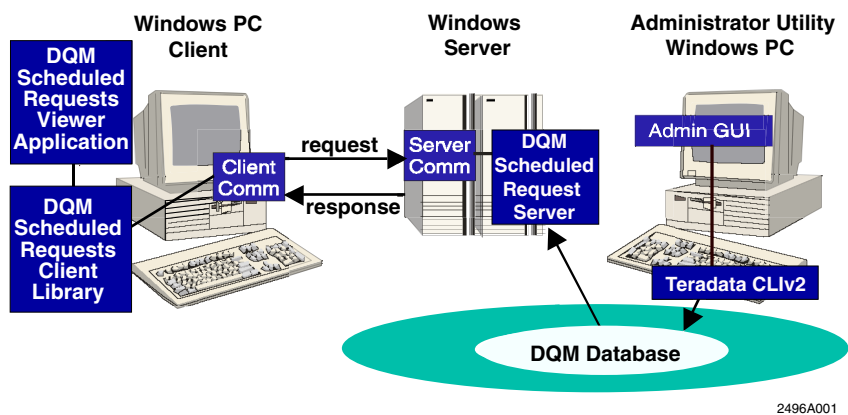
# DQM Architecture

The DQM client/server architecture for scheduled requests includes:

- Client components running on NT 4.0, 2000 and XP
- Server components running on Windows NT 4.0, 2000 and XP
- Teradata DQM Administrator utility running on NT 4.0, 2000 and XP

The following figure shows the DQM client/server architecture.

Figure 1-1 DQM Client/Server Architecture for Scheduled Requests



For information about the Server component or Teradata DQM Administrator, see the *Teradata Dynamic Query Manager Administrator Guide*.

---

# Installation Information

## Supported Client Platforms

- Windows NT 4.0
- Windows 2000
- Windows XP

## Software Installation

The client components for this release of Teradata DQM are not compatible with those of earlier releases of Database Query Manager (DBQM).

### Required Client Software

You must install the following software on a client system:

- TCP/IP driver with WinSock support (Version 1.1 or later) for Windows
- Ethernet or Token Ring packet driver compatible with the above
- Teradata CLIV2 release 4.7.1 or greater

### Optional Client Software

You may install the following optional software on a client system:

- Teradata ODBC Driver for Windows
  - Install the Teradata ODBC driver for Windows if you want to use Teradata SQL Assistant (previously known as Queryman).
- Teradata SQL Assistant
  - Install Teradata SQL Assistant for scheduling requests that were rejected due to DQM rules (see [page 2-13](#)) and for retrieving job result data (see [page 3-12](#)).

For more installation information, refer to the *Teradata Tools and Utilities Installation Guide for Microsoft Windows*.

# Software Configuration

If you are using the Teradata DQM Scheduled Requests Viewer application, no configuration should be necessary. The viewer application will temporarily establish a database session through CLIV2 to validate the database logon parameters and find the location of an active DQM Scheduled Requests Viewer.

If, for some reason, CLIV2 cannot establish a database session or you want to access the Teradata DQM Scheduled Requests client library functions directly, you can configure a default DQM server location. You will then be able to use the library functions.

## How to Specify Server Names

Follow this procedure to specify a DQM server name:

- 1 From the menu bar of the Teradata DQM Scheduled Requests Operations utility, choose the **Configurations** menu, and select **Communications**. The **Communications Parameters** dialog box opens.
- 2 Enter the following information in the Client fields in the **Communications Parameters** dialog box:

Table 1-1 Communications Parameters Dialog Box Field Descriptions

Field	Description
Default Server Port Number	Enter the default IP port number for a remote DQM server(s). This value is used if a client does not specify a port number when opening a new communications session. The default port number is 3000.
Default Server Name	Enter the network node name or address of a DQM server.

  
**Chapter 2:**

# Scheduled Requests

This chapter describes scheduled requests and contains the following information:

- [Introduction](#)
- [Connecting to a DQM Server](#)
- [Scheduling an SQL Request](#)
- [Submitting Scheduled Requests](#)
- [Scheduling Requests Using Teradata SQL Assistant](#)

---

## Introduction

DQM accepts single- or multiple-statement query requests for scheduled execution at a later time. These scheduled requests are subject to the same DQM rule checking as interactive requests.

The Scheduled Requests component allows you to submit query requests for off-line (scheduled) execution. Scheduling information can be provided that dictates preferences as to when a request should be run, to a granularity of one minute. The scheduling information is used by the DQM server as the intended start time for the request. However, due to rules or no execution time frames, the request may not be run until some time after the requested start time. Therefore, you can also specify a maximum start interval for the request, essentially specifying the desired time period (up to one month) in which the request may be run. DQM will immediately reject a submitted request if there is no time between the start time and the start interval that a rule does not apply and a scheduled request execution time frame is not available.

Through the scheduling information, you can also specify that a request be recurring, i.e., the request be run more than once. For example, a request may be set up to run daily, weekly or monthly. Therefore, because a scheduled request may actually be executed many times, the term *request* is used to mean the actual definition of the scheduled request parameters, and the term *job* is used to mean an individual instance that a scheduled request is scheduled to run.

The Scheduled Requests component of DQM may be enabled or disabled by your DBA using the Teradata DQM Administrator utility.

### Execution Time Frames

Your DBA can control when DQM will execute scheduled requests by specifying one or more Scheduled Requests execution time frames. These are time periods in which the DQM server may execute scheduled requests.

Your DBA can enable or disable execution time frames using the Teradata DQM Administrator utility. The specification of active execution time frames is required. If no execution time frames are defined or enabled, no scheduled requests will be accepted or run.

### Automatic Scheduling

DQM provides automatic scheduling using Teradata SQL Assistant (previously known as Queryman). If Teradata SQL Assistant issues a request that is restricted by DQM at the current time, it can be scheduled for later execution.

If the Scheduled Request client software is installed on the same system, the **Teradata DQM Submit Scheduled Request** dialog box displays to collect scheduling information and the request is submitted for scheduling.

**Note:** You must have Queryman version 5.2 or Teradata SQL Assistant version 6.0 or later.

## Saving Result Data

For many scheduled requests, especially automatically scheduled requests, it may be inconvenient for you to make the request *self-contained*, that is, to have the request save its own result data. In the case where a request does not save its own results, DQM can save the results, but only from the last statement in a scheduled request.

In order to do this, DQM requires that the last statement in the scheduled request be a `SELECT` statement. When the request is submitted, you must specify a valid database and table, or a valid server file name, in which to store the results.

If the results table or file already exists when the scheduled request is run, DQM will abort the job execution and mark it as failed, or destroy the results table if so specified. DQM will then recreate the table with the proper column types in order to store the data from the last statement.

To change this information, see the Results field described in [Table 2-1 on page 2-10](#).

## Immediate Execution

Using the Teradata DQM Administrator utility, your DBA can monitor and manipulate the scheduled requests job queue. By changing the state of a scheduled request job, your DBA can execute the job immediately, i.e., within five minutes, or cancel the job.

## Checking Submitted Requests

When you submit a scheduled request, DQM does the following:

- Checks the objects referenced in the request against any rules that might prevent the request from ever running during the specified time period. If such rules exist, the request is rejected.
- Checks Scheduled Request execution time frames for availability during the specified time period when rules do not apply. If no execution time frames are available during these times, the request is rejected.
- Schedules the first job for the request. Unique IDs are generated for the request and its first job.

## Dispatching Jobs

The DQM server monitors the scheduled request jobs, determines when jobs are to be run, and dispatches the DQM job execution program to run these requests. The DQM job dispatcher is aware of established execution time frames that dictate when the job executors are allowed to run. It is also aware of how many job executors are allowed to run simultaneously.

## Executing Jobs

The DQM job execution program works through the following steps when attempting to run a scheduled request job:

- 1 Retrieves information about the request from the DQM database.
- 2 Rechecks any rules that might prevent the request from running. If such rules now exist, the job is rescheduled to a time when rules no longer apply.
- 3 Logs on to the database as the user, with an optional account name.
- 4 If a results table/file was specified and the results table/file currently exists, the job fails unless the user specified that the results could be deleted.
- 5 Runs the request.
- 6 If a DQM workload limits restriction is encountered, the job is rescheduled for 15 minutes later.
- 7 If a results table/file was specified, the last statement of the scheduled request is first run in 'prepare' mode to obtain the column types and names of the result data, the result table/file is recreated with those column types, if necessary, and the last statement (a `SELECT` statement) is run. The result data is written to the results table/file.

When a job needs to be rescheduled, an updated execution time is computed. If the updated time exceeds the start interval for the job, the status of the job is marked as canceled, because it would not have been completed within its execution time frame.

## Character Sets

DQM can store scheduled request text internally in either ASCII or Shift-JIS character sets. DQM will perform the necessary conversions, if possible, from the user character set, which can be ASCII, Shift-JIS, or 'packed format' EUC. However, if DQM is internally using the ASCII character set, it will *not* accept Shift-JIS or EUC text that contains non-ASCII characters. On the other hand, if DQM is using the shift-JIS character set internally and the user is expecting ASCII, DQM will return the Shift-JIS text to the user anyway.

## Automatic Cleanup

Your DBA can define the number of days that a history of completed jobs and un-updated results should be retained before being automatically deleted by DQM. This function is provided in the Teradata DQM Administrator utility and is part of the scheduled requests profile feature.

## Scheduling SQL

You can use the Teradata DQM Scheduled Requests Viewer to schedule a new SQL request at any time. This is further discussed in [Chapter 3](#).


---

## Connecting to a DQM Server

To schedule a request, you must connect to a DQM server.

### How to Connect to a DQM Server

Follow this procedure to connect to a DQM server:

- 1 From the Windows task bar, click **Start**, then choose **Programs**. Then select **Teradata DQM Utilities 5.01** and then **Schedule Viewer**.
- 2 From the **Command** menu, choose **Connect** or press .
- 3 During startup, you are automatically prompted to connect to a DQM server using the **Teradata DQM Scheduled Requests Viewer Connect** dialog box.
- 4 In this dialog box, enter the **DBC Name**, **User Name** and **Password** for your Teradata database account. Adding information into the **Default Database** and **Account String** text box is optional.
- 5 If necessary, enter the **TDQM Server**. This information is the name or address of a system upon which the DQM server is running.

**Note:** The DQM server field is initially disabled. When you press OK, the Viewer will attempt to make a CLIV2 connection to validate the Teradata logon parameters and obtain information about the active Scheduled Request servers. If an active server is found, the Viewer will establish a connection. If there is a CLI error, the Viewer will attempt to establish a connection with the Server Name configured in the Teradata DQM Scheduled Requests Operations utility. If this is unsuccessful, the TDQM Server field is enabled and you can enter the name of a Scheduled Requests server. After clicking **OK**, the Viewer will attempt to establish a connection with the server named in the TDQM Server field.

- 6 Click **OK**.  
The parameters are validated and the Teradata DQM Scheduled Requests Viewer opens.

At any time you can disconnect and then connect again as the same user or a different user.

### Supporting Kanji Data

You need to modify (or localize) the Kanji character set in the CLIV2 *clispb.dat* file in order to support using Kanji data.

To modify the *clispb.dat* file, you need to follow the steps below.

- 1 Edit the CLIV2 *clispb.dat* file under the System32 directory with any text editor, such as Notepad.

Add the following two parameters after the last line.

```
charset_type=N  
charset_id=KANJI_SJIS_OS
```

Save your file.

- 2 Go to your Start menu and select **Settings > Control Panel > System**.
- 3 Select the Advanced tab, and then click **Environment Variables**.
- 4 Click **New** to add a new variable, and then enter `COPLIB`.
- 5 Specify the path to the *clispb.dat* file in the Value field, and then click **OK**.
- 6 Click **OK** to save your settings and exit.

Your CLIV2 connections will now support the Kanji session character set.

---

## Scheduling an SQL Request

The **Teradata DQM Submit Scheduled Request** dialog box is a Windows dynamic link library (*tdqmsubm.dll*). It is used by Teradata SQL Assistant (previously known as Queryman) and the Teradata DQM Scheduled Requests Viewer so you can schedule an SQL request.

You use this dialog box to schedule an SQL request to a DQM Scheduled Request server. All of the parameters you enter are checked for validity. Then, if the request is approved, a Request ID and Job ID appear for the scheduled request. If the request is not approved, you can change the parameters and submit the request again. For more information, see [“Submitting Scheduled Requests” on page 2-9](#).

The **Teradata DQM Submit Scheduled Request** dialog box is also invoked by the Teradata DQM Scheduled Requests Viewer to view or modify the properties of an existing scheduled request:

- In the *view* mode, the fields are read-only and cannot be modified.
- In the *modify* mode, you can change any of the properties and submit another request. To change from view mode to modify mode, click **Modify**. For more information, see [“Modifying Previous Requests” on page 3-7](#).

**Note:** SQL requests that insert Large Object (LOB) data into the database are not supported. However, you can schedule requests that retrieve LOB data and save the data into results tables and files.

# Submitting Scheduled Requests

You schedule an SQL request to a DQM Scheduled Requests server.

## How to Submit a Scheduled Request

Follow this procedure to schedule an SQL request:


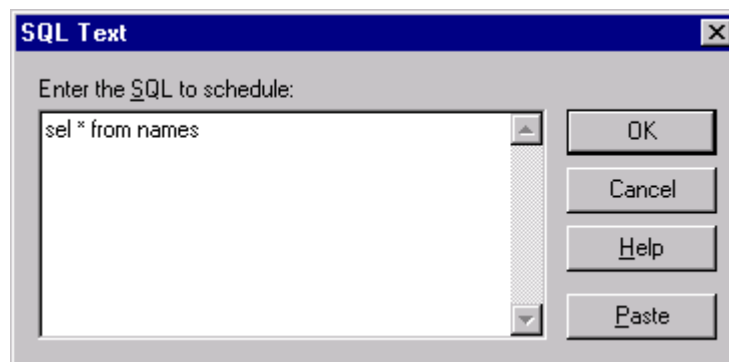
- 1 From the Windows task bar, click **Start**, then choose **Programs**. Then select **Teradata DQM Utilities 5.01** and then **Schedule Viewer**.
- 2 Connect to a DQM server if you have not done so. For information, see [page 2-6](#).
- 3 From the **Command** menu, choose **Schedule SQL** or press .
- 4 Using the **SQL Text** dialog box, enter the SQL statement(s) you want to schedule.

Figure 2-1 SQL Text Dialog Box



You can either type the SQL statement(s) directly into the dialog box text edit area or copy (**Ctrl+c**) the SQL from another tool and paste (**Ctrl+v**) it into the text edit area.

- 5 Click **OK**.  
The **Teradata DQM Submit Scheduled Request** dialog box opens. See [Figure 2-2 on page 2-12](#).
- 6 Enter the parameters for your new SQL request. See [Table 2-1 on page 2-10](#) for more information on the parameters.
- 7 Click **OK** to submit a request to the DQM Scheduled Requests server.  
All of the parameters you enter are checked for validity. Then if the request is approved, a Request ID and Job ID appears for the scheduled request in a message window.

If the request fails to be approved, you will be given the chance to change the parameters and submit the request again.  
 To cancel the request at any time, click **Cancel**.

Table 2-1 Scheduled Requests Dialog Box: Field/Button Descriptions

Field/Button	Description
SQL	View one or more SQL statements, delimited by semicolons. The statements in this text box are read-only. You created the statements from the SQL Text dialog box or using Teradata SQL Assistant.
Estimates (time/rows)	View the estimated time and rows the request is expected to execute and generate, respectively. These values are calculated by the DQM server from the EXPLAIN statement that is run on the request. This information is read-only. You cannot edit them.
Update	<p>This button is enabled when one or more characters of the SQL text of a request is changed.</p> <p>Retrieves information about the new request you entered in the SQL text box from the Teradata DQM Scheduled Requests server and displays the following information for the new request:</p> <ul style="list-style-type: none"> <li>• Whether the new request will generate results View the Results section in the bottom right corner.</li> <li>• Time and row estimates for the new request View the time and row estimates underneath the SQL text box.</li> </ul>
User Name	View your Teradata database logon name. This information is obtained from the Teradata DQM Scheduled Requests Viewer or Teradata SQL Assistant and is read-only. You cannot edit it.
Account String	View your Teradata database account string This information is obtained from the Teradata DQM Scheduled Requests Viewer or Teradata SQL Assistant and is read-only. You cannot edit it.
Request Name	Enter a user-defined name for the request (optional).
E-mail address for notification on completion	<p>E-mail address where DQM will send a notification message when a request job finishes execution. This field is editable depending on the profile type and is optional.</p> <p>For information on installing and configuring the software to enable this feature, see the <i>Teradata Dynamic Query Manager Administrator Guide</i>.</p>
<b>Scheduling:</b>	
Frequency	<p>Choose the frequency in which the request will run. The default is Once. This indicates the scheduled SQL will execute just one time.</p> <ul style="list-style-type: none"> <li>• Once</li> <li>• Daily</li> <li>• Weekly</li> <li>• Monthly</li> </ul> <p>Depending on your profile, all of the frequencies may be disabled except for Once.</p>

Table 2-1 (Continued) Scheduled Requests Dialog Box: Field/Button Descriptions

Field/Button	Description
Start Days/Dates	<p>Enter the date, days of the week, or dates of the month the request should be executed.</p> <p>Selecting a different frequency may change these values. This is set to the first date and time computed by the DQM server when no restrictions apply to the request and when a scheduled request execution time frame is available.</p>
Start Time	<p>Enter the time the request should be executed. The default values indicate the next time the DQM server predicts the request will be able to be executed.</p>
Maximum Start Interval	<p>Enter the maximum job execution interval in days and hours, beyond the start time, you want the job to begin to execute. For new requests, the initial value is determined by the profile type.</p> <p>The default value is defined by the Teradata DQM Administrator utility.</p>
<b>Results:</b>	<p>This group of controls specify where and how the results of the scheduled request are to be saved. If no results are generated, these controls are disabled. These fields are selectable depending on the profile type.</p>
Save Results To	<p>Select where the results from the last statement of the query are to be stored:</p> <ul style="list-style-type: none"> <li>• Database Table</li> <li>• Text File</li> </ul> <p>The default value is defined in the Teradata DQM Administrator utility.</p>
Database Name	<p>Enter the database name in which DQM will store the results from the last statement when it is run. When results are saved to a database table, this field is initialized to a default database name that is defined in the Teradata DQM Administrator utility.</p>
Table/File Name	<p>Enter the database table name or the text file name in which DQM stores the results from the last statement when it is run.</p>
Database Options	<p>When creating a database table, choose the type of tables created (optional):</p> <ul style="list-style-type: none"> <li>• Fallback</li> <li>• Multiset</li> </ul>
Result Options	<p>Choose whether the results should</p> <ul style="list-style-type: none"> <li>• Append if exists: Appended to an existing table/file</li> <li>• Drop if exists: Stored after dropping the existing table/file. This option is the default.</li> <li>• Fail if exists: Not stored if scheduled request failed due to the result table/file already existing</li> </ul>

Chapter 2: Scheduled Requests  
**Submitting Scheduled Requests**

Table 2-1 (Continued) Scheduled Requests Dialog Box: Field/Button Descriptions

Field/Button	Description
Field Separator	Choose the character field separator for results that are to be saved to a file. The default value is defined by the Teradata DQM Administrator utility. The values are: <ul style="list-style-type: none"> <li>• Tab</li> <li>• Space</li> <li>• Semicolon</li> <li>• Comma</li> <li>• Bar  </li> </ul>
Automatically cleaned up after	The number of days the results are saved before being automatically deleted by DQM. This value is set by the Teradata DQM Administrator utility and is read-only. It cannot be edited.

Following is a sample of the **Teradata DQM Submit Scheduled Request** dialog box:

Figure 2-2 Teradata DQM Submit Scheduled Request Dialog Box

---

# Scheduling Requests Using Teradata SQL Assistant

DQM can save and schedule any query to execute at a later time. You may need to do this because the query was rejected at the time it was executed due to DQM rules. To schedule a query that was rejected because of rules, you must use Teradata SQL Assistant.

Teradata SQL Assistant is a Windows ODBC application that issues SQL requests to a database. If Teradata SQL Assistant detects that a query has been rejected by a Teradata database due to a TDQM error (statuses 3149-3150), it will attempt to schedule the request for batch execution using the Teradata DQM Scheduled Requests client software.

## How to Set Up Automatic Scheduling

You must complete the following steps for your query to automatically be scheduled using Teradata SQL Assistant:

- 1 Ensure the Teradata DQM Scheduled Requests client software is installed on your system.
- 2 Ensure the DQM client is configured to allow scheduling of rejected requests. See [page 4-4](#).

## Steps Your DBA Must Complete

Next, your DBA must complete the following steps:

- 1 Ensure the Scheduled Requests feature is enabled using the Teradata DQM Administrator utility.
- 2 Ensure at least one Scheduled Requests server is running.
- 3 Ensure the request is not always restricted (24 hours a day, 7 days a week).
- 4 Using the Teradata DQM Administrator utility, your DBA ensures you have a scheduled requests profile to allow scheduling.

If the above steps have been taken, your query will automatically be scheduled using Teradata SQL Assistant.

For information about retrieving results using Teradata SQL Assistant, see [“Retrieving Job Result Data” on page 3-12](#).



  
**Chapter 3:**

# Teradata DQM Scheduled Requests Viewer

This chapter discusses the Teradata DQM Scheduled Requests Viewer and contains the following information:

- [Introduction](#)
- [Teradata DQM Scheduled Requests Viewer Main Window](#)
- [Viewing Scheduled Request Properties](#)
- [Modifying Previous Requests](#)
- [Retrieving Job Result Data](#)
- [Deleting a Request](#)
- [Canceling or Deleting a Job](#)
- [Dropping Results](#)
- [Retrieving Job Result Data](#)
- [Viewing Job Result Information](#)
- [Refreshing the Job List](#)
- [Setting the Refresh Rate](#)
- [Online Help and Copyright Information](#)
- [Disconnecting from a DQM Server](#)

---

## Introduction

The Teradata DQM Scheduled Requests Viewer allows you to:

- View the status of DQM scheduled jobs
- View information about jobs and requests
- Submit new scheduled SQL requests
- View the Results Table for successfully completed jobs
- Cancel a job
- Delete jobs and requests
- Clean up (drop) results tables and files
- Retrieve a completed request's result data (using Queryman 5.2 or later)

The Teradata DQM Scheduled Requests Viewer provides information for only the particular user that is logged on to the Teradata database (as opposed to the Teradata DQM Administrator utility, which provides information to the DBA about all scheduled requests and jobs). The DQM server must be up and running before the Teradata DQM Scheduled Requests Viewer can operate.

# Teradata DQM Scheduled Requests Viewer Main Window

To open the Teradata DQM Scheduled Requests Viewer from the Windows task bar, do the following:

**Note: Connect to a DQM server, if you have not already done so. For information on connecting to a DQM server, see [“Connecting to a DQM Server” on page 2-6.](#)**

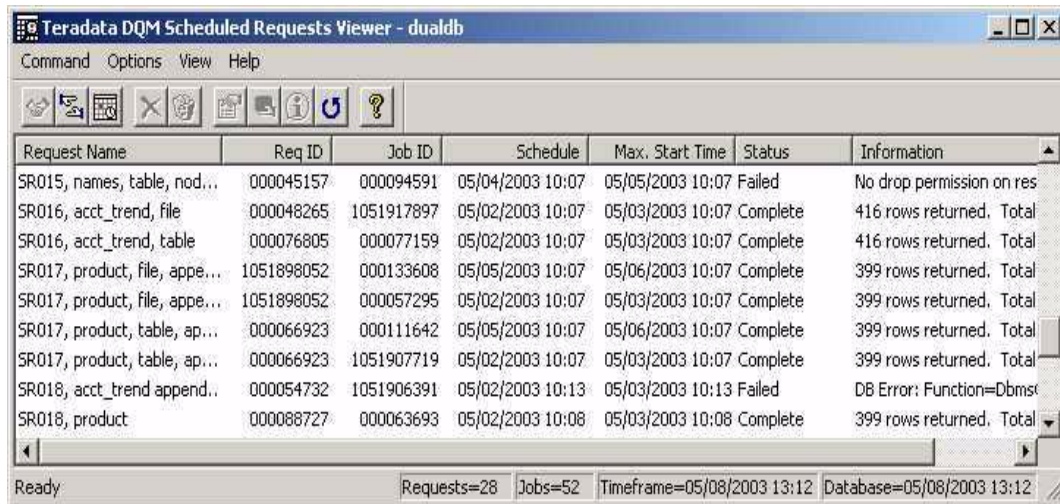
- 1** Go to your **Start** menu, and then choose **Programs > Teradata DQM Utilities 5.1. > Schedule Viewer.**
- 2** Enter your **DBC Name** and **Password.**
- 3** Click **OK.**

After you have successfully connected to a DQM server, your scheduled jobs are retrieved and displayed in the Viewer. The following information is displayed about each scheduled job the logged in user has currently in the system:

Table 3-1 TDQM Scheduled Requests Viewer Column Descriptions

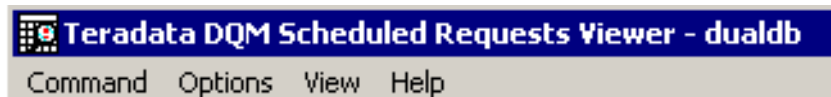
Column Name	Description
Request Name	View the name entered when the request was scheduled.
Req ID	View a unique numeric ID generated by DQM identifying a request.
Job ID	View a unique numeric ID generated by DQM identifying a job.
Schedule	View the current scheduled run time.
Max. Start Time	View the latest time the job can begin execution.
Status	View the current status of the job.
Information	View information on how the job was completed, such as database error, rows returned, and more.

Figure 3-1 Teradata DQM Scheduled Requests Viewer Main Window



## Menu Bar

You can use the menu bar in the Teradata DQM Scheduled Requests Viewer main window to access all of the functions for the viewer.



You can also right-click on any request in the Teradata DQM Scheduled Requests Viewer main window and a shortcut menu appears with a menu of most functions.

## Toolbar

The Teradata DQM Scheduled Requests Viewer main window also has a toolbar with icons you can click as a shortcut to the more commonly used features. When you open the viewer, you will notice that only a few of the buttons in the toolbar are available. Toolbar buttons appear gray when you cannot use the related function.



Specifically what features these buttons are for is discussed throughout the rest of this chapter.

## Status Bar

The status bar at the bottom of the screen displays important information. The status of the Teradata DQM Scheduled Requests Viewer for the currently

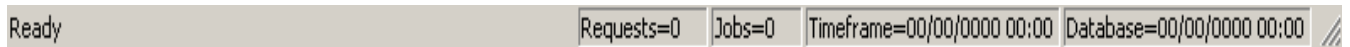
selected menu item is shown in the bottom left corner. Following the status information are four user information panes showing the following:

**Requests:** The number of scheduled requests you have in the system.

**Jobs:** The number of scheduled jobs.

**Timeframe:** The current or next Scheduled Request execution time frame (the DBA uses the Teradata DQM Administrator to set Scheduled Requests execution time frames).

**Database:** The current database date and time.



## Sorting Columns

The information displayed in the Teradata DQM Scheduled Requests Viewer main window can be sorted by any column. To do this, click the column headings at the top of the columns. This sorts the requests in ascending order.

## Viewing Scheduled Request Properties

The **Teradata DQM View Scheduled Request** dialog box has information about schedule properties for a job you select in the Teradata DQM Scheduled Requests Viewer.

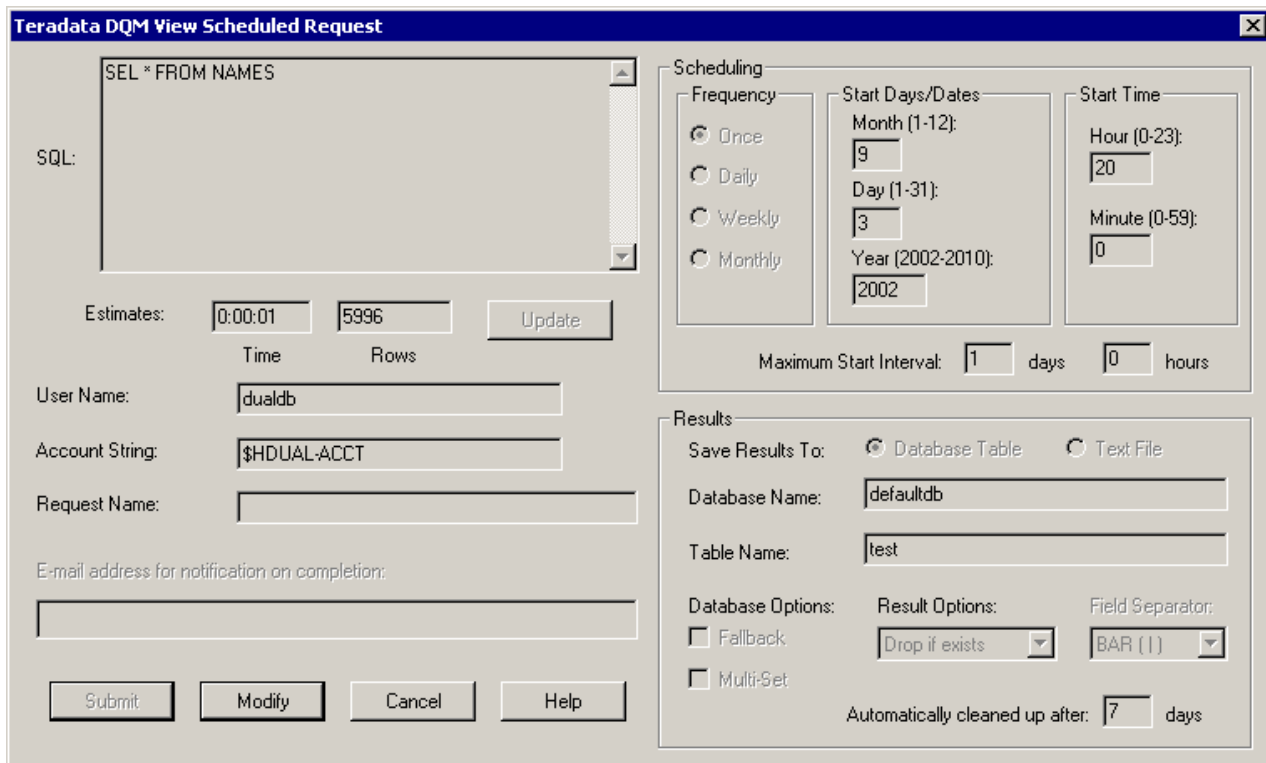
The information in this dialog box is read-only. You cannot modify it; however, you can change any of the properties and submit another request. For more information, see [“Modifying Previous Requests” on page 3-7](#).

### How to View Scheduled Request Properties

Follow this procedure to view Scheduled Request properties:

- 1 From the Teradata DQM Scheduled Requests Viewer, go to the **View** menu.
- 2 Choose **Request Properties** or press .  
The **Teradata DQM View Scheduled Request** dialog box opens.

Figure 3-2 Sample Teradata DQM View Scheduled Request Dialog Box



**Teradata DQM View Scheduled Request**

SQL: SEL \* FROM NAMES

Estimates: Time: 0:00:01 Rows: 5996 Update

User Name: dualdb

Account String: \$HDUAL-ACCT

Request Name:

E-mail address for notification on completion:

Scheduling

Frequency:  Once  Daily  Weekly  Monthly

Start Days/Dates: Month (1-12): 9 Day (1-31): 3 Year (2002-2010): 2002

Start Time: Hour (0-23): 20 Minute (0-59): 0

Maximum Start Interval: 1 days 0 hours

Results

Save Results To:  Database Table  Text File

Database Name: defaultdb

Table Name: test

Database Options:  Fallback  Multi-Set

Result Options: Drop if exists

Field Separator: BAR (|)

Automatically cleaned up after: 7 days

Submit Modify Cancel Help

## Modifying Previous Requests

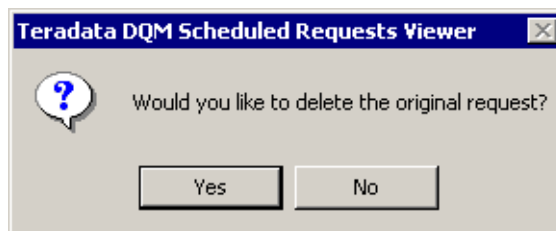
The **Teradata DQM Submit Scheduled Request** dialog box is invoked by the Teradata DQM Scheduled Requests Viewer to view or modify the properties of an existing scheduled request:

- In the *view* mode, the fields are read-only and cannot be modified.
- In the *modify* mode, you can change any of the properties and submit another request.

### How to Modify a Previous Request and Submit

Follow this procedure to modify a previous request and submit another request:

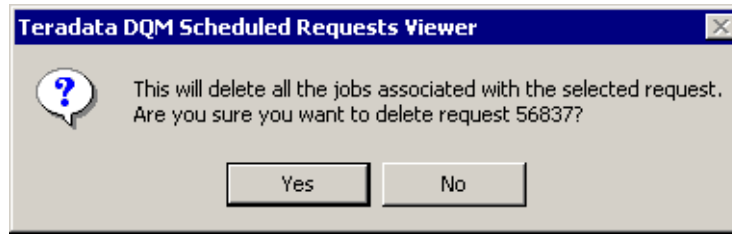
- 1 From the Windows task bar, click **Start**, then choose **Programs**. Then select **Teradata DQM Utilities 5.01** and then **Schedule Viewer**.
- 2 Connect to a DQM server if you have not done so. For information, see [page 2-6](#).
- 3 From the Teradata DQM Scheduled Requests Viewer, double-click a previously submitted request.
- 4 From the **Teradata DQM View Scheduled Request** dialog box, click **Modify**.
- 5 Change any of the enabled fields and click **Submit**.  
If the new request is submitted successfully, a message box appears with your Request ID number and Job ID number.
- 6 Click **OK**.
- 7 You are prompted to delete the original request. Click **Yes** to delete the original request. Otherwise, click **No**.



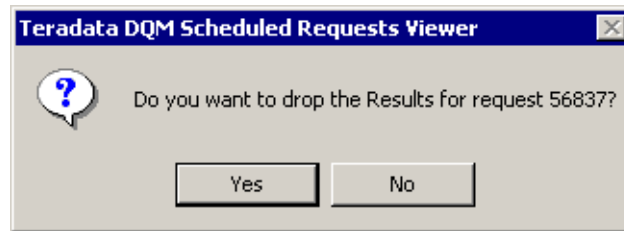
If you click **No**, your new request appears in the Viewer. Your original request remains in the Viewer.

If you click **Yes**, another message asks if you are sure you want to delete all jobs associated with the selected request.

- 8 Click **Yes** if you want to delete all jobs associated with the selected request. Otherwise, click **No**.  
If you click **No**, your request appears in the Viewer.



- 9 Click **Yes** if you want to drop the results for the request. Otherwise, click **No**.  
If you click **No**, your request appears in the Viewer.



- 10 Click **Yes** if you want to drop the results for the request. Otherwise, click **No**.  
If you click **Yes**, the results for the request are dropped and your new request appears in the Viewer.  
If you click **No**, the results for the request are not dropped and your new request appears in the Viewer.

## Deleting a Request

The **Delete Request** command allows you to delete a selected scheduled request. When a request is deleted, all jobs associated with that request will also be deleted.

### How to Delete a Request

Follow this procedure to delete a request:

- 1 From the Teradata DQM Scheduled Requests Viewer, go to the **Option** menu.
- 2 Choose **Delete Request**.

There is no toolbar shortcut for this command.


---

## Canceling or Deleting a Job

The **Cancel Job** command allows you to cancel the scheduled execution of a selected job. The **Cancel Job** command will work only for a job that has a status of “waiting”. Once the job is canceled, it cannot be restarted. A new request must be submitted or, if it is a recurring request, a new job will be generated automatically by DQM before the next day.

### How to Cancel a Job

Follow this procedure to cancel a job:

- 1 From the Teradata DQM Scheduled Requests Viewer, go to the **Options** menu.
- 2 Choose **Cancel** or press .

The **Delete Job** command allows you to delete a selected job. Completed jobs may be deleted as required to save space and allow for faster updates of the job list in the Viewer’s main window. Jobs are also deleted periodically as specified by the Teradata DQM Administrator utility. Only jobs that have a status of “Complete” can be deleted. You cannot delete a job with a status of “Waiting.” You can delete a job and the scheduled request will still be available in the system (unless the job is for a one-time request).

### How to Delete a Job

Follow this procedure to delete a job:

- 1 From the Teradata DQM Scheduled Requests Viewer, go to the **Options** menu.
- 2 Choose **Delete** or press .

## Dropping Results

The **Drop Results** command allows you to drop the results table or file associated with the selected request. This command allows you to clean up results tables or files that have been generated for the request.

If you wish to use the same results table or file for each request, then the results must be dropped or the **Drop if exists** option must be selected when scheduling requests. For information on this option, see [Table 2-1 on page 2-10](#).

### How to Drop Results

Follow this procedure to drop results:

- 1 From the Teradata DQM Scheduled Requests Viewer, go to the **Option** menu.
- 2 Choose **Drop Results**.

There is no toolbar shortcut for this command.

## Retrieving Job Result Data


The **Retrieve Results** command allows you to retrieve the result data for any selected job that has a status of complete.

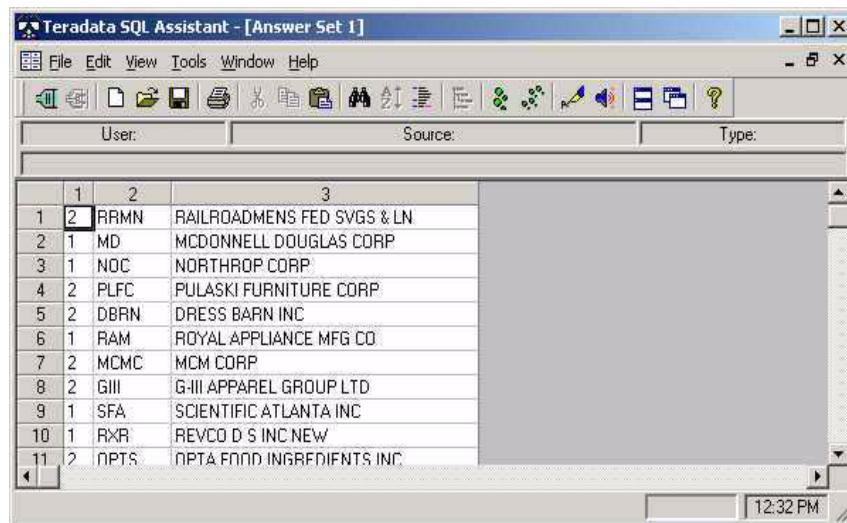
**Note:** This command is available only if Queryman, version 5.02 or later, or Teradata SQL Assistant 6.0 is installed on your system.

The presence of Teradata SQL Assistant is automatically checked each time the Teradata DQM Scheduled Requests Viewer is started. By selecting a completed job and activating this command, Teradata SQL Assistant is launched with the SQL to retrieve the result data from the job's results table or file.

### How to Retrieve Results From Server Text File


To retrieve results from the server text file, follow this procedure:

- 1 From the Teradata DQM Scheduled Requests Viewer main window, select a job with a status of "Completed."
- 2 From the **View** menu, choose **Retrieve Results** or press the **Retrieve Result Data** button .
- 3 When retrieving a results file, you will be prompted for a local file name in which to copy the results before invoking Teradata SQL Assistant with the local file name.
- 4 Teradata SQL Assistant opens and retrieves your results and loads it into a Teradata SQL Assistant answer set window.



## How to Retrieve Results From a Database Table

To retrieve results from a database table, follow this procedure.

- 1 From the Teradata DQM Scheduled Requests Viewer main window, select a job with a status of "Complete."
- 2 From the **View** menu, choose **Retrieve Results** or press the **Retrieve Result Data** button .
- 3 You are prompted for an ODBC data source.
  - a From the **Select Data Source** dialog box, select the **Machine Data Source** tab.
  - b Choose the appropriate **Data Source Name** and click **OK**.
- 4 Teradata SQL Assistant opens and retrieves the results and loads it into a Teradata SQL Assistant answer set window.

To save an answer set to a file, refer to the *Teradata SQL Assistant for Microsoft Windows User Guide*.

**Note:** Each time this command is activated, a new instance of Teradata SQL Assistant may be executed in order to allow multiple queries to run at once.


---

## Viewing Job Result Information

The **Job Information** command allows you to easily view the text from the **Information** column of the Teradata DQM Scheduled Requests Viewer. This text is often long and not completely visible in the list.

### How to View Job Result Information

Follow this procedure to view job result information:

- 1 From the Teradata DQM Scheduled Requests Viewer, go to the **View** menu.
- 2 Choose **Job Information** or press .
- 3 When you select a job and activate this command, the entire text is displayed in the **Job Result Information** message box.



- 4 Click **OK**.

|

## Refreshing the Job List

The **Refresh** command allows you to immediately update the jobs list with information from the DQM server.

### How to Refresh the Job List

Follow this procedure to refresh the job list:

- 1 From the Teradata DQM Scheduled Requests Viewer, go to the **View** menu.
- 2 Choose **Refresh** or press .

---

## Setting the Refresh Rate

The **Settings** command allows you to set the refresh rate for the update of the jobs list from the server.

### How to Set the Refresh Rate

Follow this procedure to set the refresh rate:

- 1 From the Teradata DQM Scheduled Requests Viewer, go to the **View** menu.
- 2 Choose **Settings**.  
The **Scheduled Request Viewer Settings** dialog box appears.



- 3 Set the refresh interval between 5 and 99 minutes.  
Although the refresh is a background process, it still adds to network traffic and should only be set as low as needed.
- 4 Click **OK**.

# Online Help and Copyright Information

## Online Help

You can open the Teradata DQM Scheduled Requests Viewer online help system at the contents level. From the **Help** menu, choose **Contents**.

You can also open the online help system at the index level. From the **Help** menu, choose **Search for Help on**.

## Copyright and Version Information

You can open the **About Teradata DQM Scheduled Requests Viewer** dialog box to see copyright and version information.

From the **Help** menu, choose **About TDQM Viewer** or press .




## Disconnecting from a DQM Server

At any time, you may disconnect from a DQM server and close the Teradata DQM Scheduled Requests Viewer.

### How to Disconnect from a DQM Server

Follow this procedure to disconnect from a DQM server:

- 1 From the Teradata DQM Scheduled Requests Viewer, go to the **Command** menu.
- 2 Choose **Disconnect** or press .  
This clears the main window and prevents any further actions until you connect again.
- 3 Click **Yes** to confirm you want to disconnect.
- 4 From the **Command** menu, click **Exit**.  
The Teradata DQM Scheduled Requests Viewer closes.

  
**Chapter 4:**

# Teradata DQM Scheduled Requests Operations Utility

This chapter describes the features you can use with the Teradata DQM Scheduled Requests Operations utility and contains the following information:

- [Introduction](#)
- [Changing Configuration Parameters](#)
- [Viewing Component Information](#)
- [Teradata DQM Error Log Files](#)
- [Enabling and Disabling Tracing](#)
- [Teradata DQM Scheduled Requests Operations Menu Bar](#)

---

## Introduction

The Teradata DQM Scheduled Requests Operations utility provides operations for both DQM client and DQM server software programs. If only the DQM client software is installed, the operations of this utility that pertain to the DQM server will not be available.

The DQM client software has some general functions used by all DQM components. These functions are explained below.

### Functions

The Teradata DQM Scheduled Requests Operations utility has the following operational functions for the DQM scheduled requests client components. You can do the following:

- Configure the communications and client parameters
- Display configuration and runtime information
- View, save, or delete the DQM error log files
- Enable and disable tracing

The Teradata DQM Scheduled Requests Operations utility menu bar and its commands are explained at the end of this chapter.

## Changing Configuration Parameters

There are three types of DQM configuration parameters: Communications, Client, and Server. Even though these parameters are stored in the Windows registry, you should change them using the Teradata DQM Scheduled Request Operations utility. As a user, you need to only know about communications and client configuration parameters. For information on server configuration parameters, refer to the *Teradata Dynamic Query Manager Administrator Guide*.

Some of the communications parameters are read only during the start up phase of the appropriate component. Depending on which configuration parameters you change, this utility and all the DQM software may need to be terminated and then restarted to take affect.

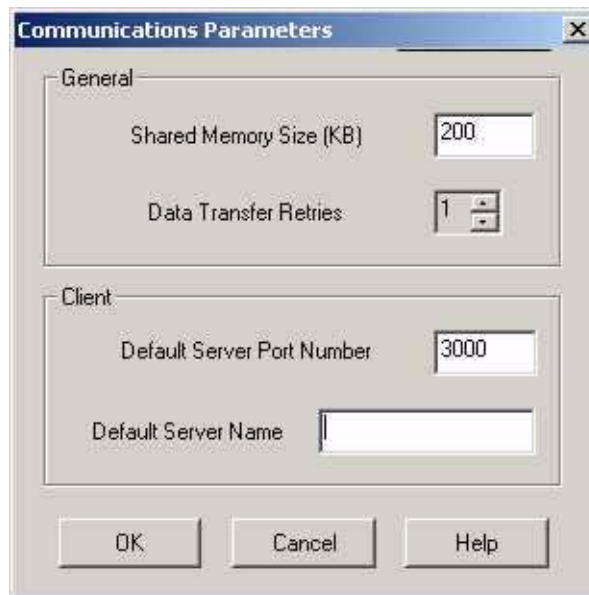
For a list of the default configuration parameters, see [“Default Configuration Parameters” on page B-2](#).

### How to Change the Communications Parameters

You shouldn't have to change any of the communications configuration parameters. The communications components also use these parameters to provide communication services to the DQM servers.

The communications parameters can be located as follows:

- 1 From the menu bar of the Teradata DQM Scheduled Requests Operations utility, choose the **Configurations** menu, and select **Communications**.



The fields are described below.

Table 4-1 Communications Parameters Dialog Box: Field Descriptions

Field	Description
<b>Client:</b>	<p><b>Important:</b> The <b>Default Server Port Number</b> and <b>Default Server Name</b> need to be specified only if you are calling the DQM client library functions from your own application.</p> <p>Otherwise, the Teradata DQM Scheduled Requests Viewer will use CLIV2 to find the address and port number of an active DQM server.</p>
Default Server Port Number	Specifies the default IP port number for a remote DQM server(s). This value is used if a client does not specify a port number when opening a new communications session. The default port number is 3000.
Default Server Name	Specifies the default network node name or address of a remote DQM server. This value is used if a client does not specify a server name when opening a new communications session.
<b>General:</b>	
Comm Shared Memory Size	Specifies the size, in kilobytes, of the shared memory that is used by all the DQM Communications components to store connection and message information. The default is 200.
Data Transfer Retries	Specifies the number of times the DQM Communications components retries system and network functions when a failure is encountered. The default is 1.

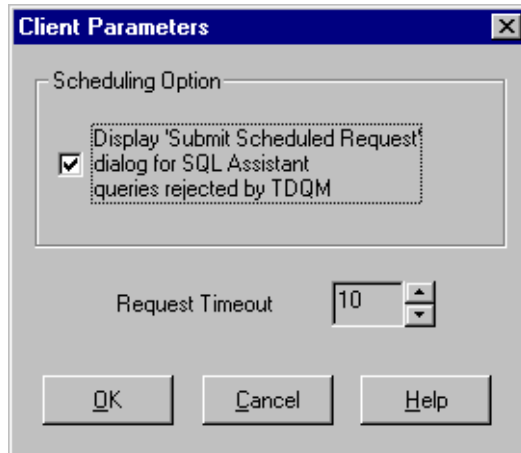
To view the server fields, the DQM server software must be installed. If only the client software is installed, this section is unavailable. For more information on the server fields, see the *Teradata Dynamic Query Manager Administrator Guide*.

## How to Change Client Parameters

You can specify the configuration parameters used by the client components on this system to customize preferences and to correctly interact with managed clients by using the **Client Parameters** dialog box.

Follow this procedure to change the client parameters:

- 1 From the menu bar of the Teradata DQM Scheduled Requests Operations utility, choose the **Configurations** menu, and select **Client**.



**2** Change the following fields:

Table 4-2 Client Parameters Dialog Box: Field Descriptions

Field	Description
Display 'Submit Scheduled Request' dialog for SQL Assistant queries rejected by TDQM	Select this check box to display the Teradata DQM Submit Scheduled Request dialog box. This dialog box enables you to schedule requests issued by the Teradata SQL Assistant application that have been rejected with a DQM status. (3149, 3150)
Request Timeout	Specify the number of seconds (between 5 and 99) that the DQM software waits before timing out a request to the DQM server. The default is 10 seconds.

## Viewing Component Information

You can view information that the main DQM communications components are actually using at runtime. To view the server and scheduled requests components, the DQM server software must be installed.

### How to View Communications Information

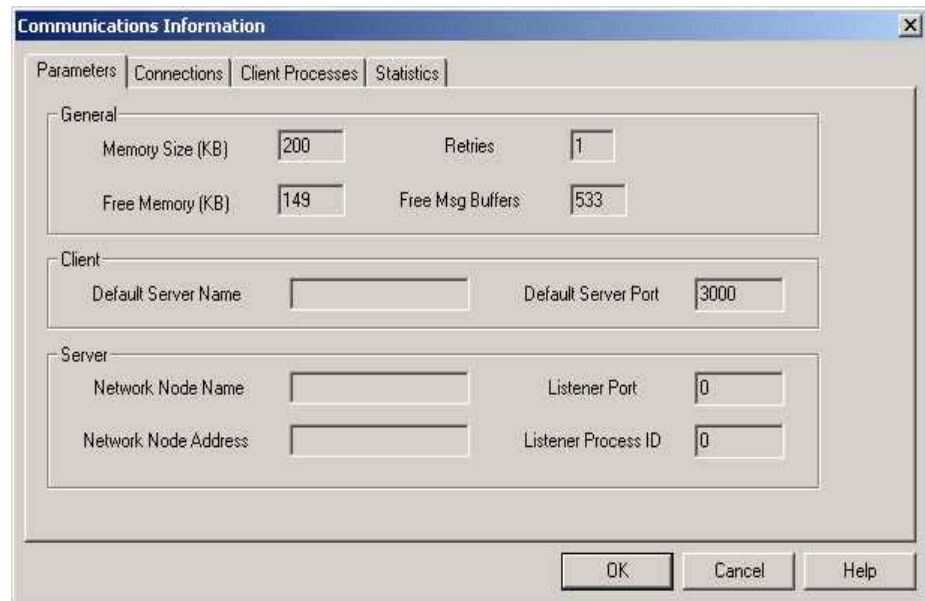
Follow this procedure to view communications information:

1 From the menu bar of the Teradata DQM Scheduled Requests Operations utility, go to the **Information** menu

2 Choose **Communications**.

The **Communications Information** dialog box opens and you can view information about the following:

- Parameters
- Connections
- Client Processes
- Statistics



For more information about the **Communications Information** dialog box, refer to "[Communications Information](#)" on page A-2, access Help from the **Help** menu, or press **F1** while the dialog box is open.

## Teradata DQM Error Log Files

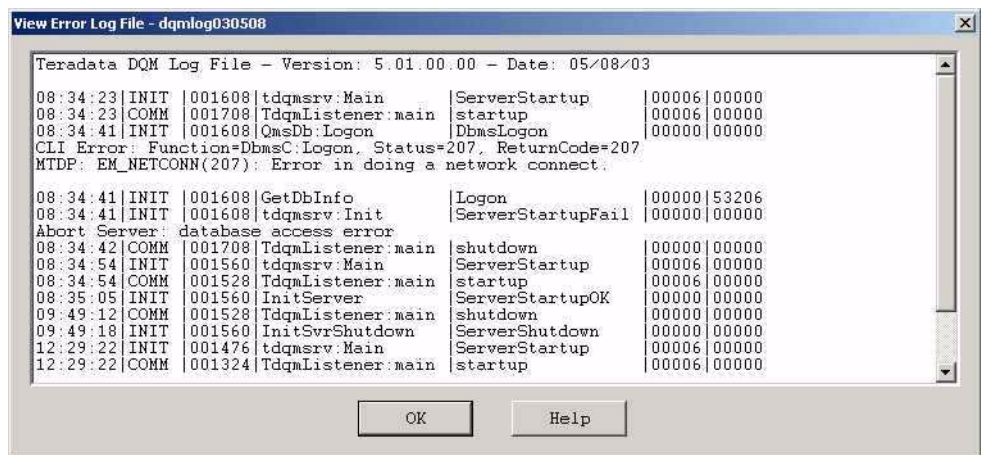
Teradata DQM error log files are intended to provide NCR support personnel and users with a general description of problems that have occurred.

The DQM error log file is called *dqmlog*. It always exists if errors have been logged. A different error log file is created for each date that a error log entry needs to be made. The error log file name is appended with the year, month, and date it was created. For example, *dqmlog020712* was created to contain error log entries that occurred on July 12, 2002. If it is deleted, another will be created when needed.

The DQM components log *all* severe errors related to DQM to this file. Only DQM errors, and not user request errors, are logged. Database errors encountered when executing scheduled requests are not logged in the error file, but are saved in conjunction with the scheduled request being executed.

The default DQM error log is in the *c:\dqmlog* directory. This actual location is specified during installation and saved in the Windows registry during DQM Client installation.

Figure 4-1 Sample Error Log File



For a description of the contents of the error log files, see [“TDQM Error Log Files” on page B-4](#).

### How to View Error Log Files

Follow this procedure to view error log files:

- 1 From the menu bar of the Teradata DQM Scheduled Requests Operations utility, choose the **Error Log** menu, and select **View** to open the **View Error Log Files** dialog box.

The error log files appear in the **Error Log Files** list.

- 2 From the list, click once to highlight the file you want to view.
- 3 Click **OK** to open the **View Error Log File** dialog box.
- 4 After viewing the error log file, click **OK** to close the **View Error Log File** dialog box.

## How to Save Error Log Files

Follow this procedure to save error log files:

- 1 From the menu bar of the Teradata DQM Scheduled Requests Operations utility, choose the **Error Log** menu, and select **Save** to open the **Save Error Log Files** dialog box.
- 2 Select the name of the error log file you want to save from the **Error Log Files** list, and click **OK**.
- 3 In the **Save In** list box, select a directory location to save the file.
- 4 Enter a file name in the **File Name** list box.
- 5 In the **Save as Type** list box, accept the default .txt file format.
- 6 Click **Save**.

## How to Delete Error Log Files

Follow this procedure to delete error log files:

- 1 From the menu bar of the Teradata DQM Scheduled Requests Operations utility, choose the **Error Log** menu, and select **Delete** to open the **Delete Error Log Files** dialog box.
- 2 From the list, click once to highlight a file you want to delete or hold the **Ctrl** key and click multiple files to highlight.
- 3 Click **OK** to delete the file.
- 4 Click **OK** to confirm you want to delete the file or click **Cancel** to not delete the file.

## Enabling and Disabling Tracing

You can use a tracing function from the Teradata DQM Scheduled Requests Operations utility. Tracing writes special debugging information to text files. This information is useful when troubleshooting the system.

When tracing is on, information regarding the DQM operation is saved to files. Depending on where the client software is installed, these files are typically located at *c:\dqmlog*. The DBA or technical support personnel can troubleshoot problems by viewing these files.

Depending on the problem you are resolving, tracing can be turned on selectively for each of the three DQM components. Tracing can be toggled on or off before or after the components have been started. This eliminates the need to stop and restart DQM components in order to change the tracing setting.

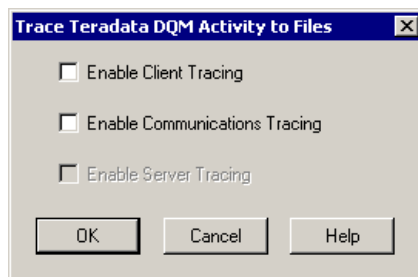
**Warning:** Tracing can use a lot of disk space and can severely impact performance. You should use it only when resolving a problem. The default is no tracing.

### How to Enable and Disable Tracing

Follow this procedure to enable or disable tracing:

- 1 From the menu bar of the Teradata DQM Scheduled Requests Operations utility, choose the **Configurations** menu and select **Tracing**.
- 2 From the **Trace Teradata DQM Activity to Files** dialog box, choose from the following:
  - Enable Client Tracing to enable tracing of client DQM component activities.
  - Enable Communications Tracing to enable tracing of communications component activities.

To enable server tracing, the DQM server software must be installed. If only the client software is installed, this check box is unavailable.



# Teradata DQM Scheduled Requests Operations Menu Bar

The menu bar provides access to all the utility's functions.

Figure 4-2 Teradata DQM Scheduled Requests Operations Menu Bar



## File Menu

The **File** menu has a command that allows you to exit the Scheduled Requests operations.

Table 4-3 Scheduled Requests Operations: File Menu Command

Use this command...	To...
Exit	Close the Teradata DQM Scheduled Requests Operations utility.

## Configuration Menu

The **Configuration** menu has commands that help you to configure parameters and activate tracing. The following table lists the commands you can perform from the **Configuration** menu:

Table 4-4 Scheduled Req. Operations: Configuration Menu Commands

Use this command...	To...
Communications	Open the <b>Communications Parameters</b> dialog box so you can configure communications parameters.
Client	Open the <b>Client Parameters</b> dialog box so you can configure client parameters.
Server	Open the <b>Server Parameters</b> dialog box so you can configure the server parameters.
Tracing	Open the <b>Trace Teradata DQM Activity to Files</b> dialog box so you can enable or disable tracing for the client, the server, and/or communications components of DQM.

## Server Menu

The **Server** menu has commands that control the DQM server if the server software is installed. The following table lists the commands you can perform from the **Server** menu:

Table 4-5 Scheduled Requests Operations: Server Menu Commands

Use this command...	To...
Start	Start the DQM server service.
Stop	Stop the DQM server service and shut down all the DQM server components.

## Information Menu

The **Information** menu has commands that help you to view information about the components. The following table lists the commands you can perform from the **Information** menu:

Table 4-6 Scheduled Requests Operations: Information Menu Commands

Use this command...	To...
Communications	Open the <b>Communications Information</b> dialog box so you can view information about the communications components.
Server	Open the <b>Server Information</b> dialog box so you can view information about the server.  This command is only available if the DQM server software is installed.  For details about the Server Information dialog box, see the <i>Teradata Dynamic Query Manager Administrator Guide</i> .
Scheduled Requests	Open the <b>Scheduled Requests Information</b> dialog box so you can view information about scheduled requests.  This command is only available if the DQM server software is installed.

## Error Log Menu

The **Error Log** menu has commands that help you to view, reset, or save the file. The following table lists the commands you can perform from the **Error Log** menu:

Table 4-7 Scheduled Requests Operations: Error Log Menu Commands

Use this command...	To...
View	Display a <i>dqmlog</i> file.
Delete	Delete one or more <i>dqmlog</i> files.
Save	Save a copy of a <i>dqmlog</i> file into a text file so it can be sent to technical support.

## Help Menu

The **Help** menu has commands that help you to access the online help and view information about this utility. The following table lists the commands you can perform from the **Help** menu:

Table 4-8 Scheduled Requests Operations: Help Menu Commands

Use this command...	To...
Contents	Open the Teradata DQM Scheduled Requests Operations utility online help at the Contents level.
Search for Help on	Open the Teradata DQM Scheduled Requests Operations utility online help at the Index level.
About TDQM Operations	Open the <b>About Teradata DQM Operations</b> dialog box containing copyright and version information.



**Appendix A:**

# Communications Component Information

This appendix contains [Communications Information](#).

# Communications Information

The **Communications Information** dialog box provides information about the communications components of DQM. From the menu bar of the Teradata DQM Scheduled Requests Operations utility, open the **Information** menu and select **Communications**.

The **Communications Information** dialog box includes the following tabs:

Table A-1 Information Dialog Box: Tab Descriptions

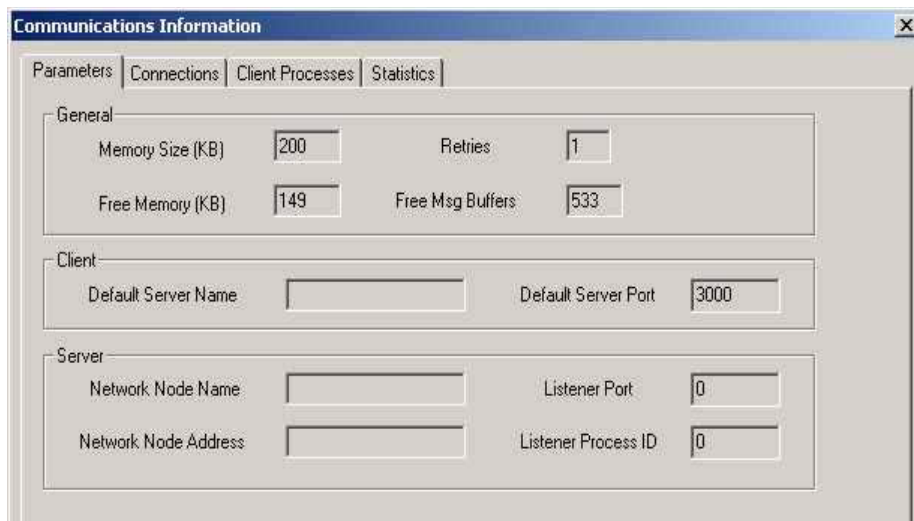
Tab	Description
Parameters	Configuration and general runtime information about the DQM Communications components.
Connections	Information about the physical and logical communications connections.
Client Processes	Information about the client application processes that have attached to the communications library.
Statistics	Information about the number of communications connections and the requests sent over the connections.

The following tables give you information about the fields in each tab in the **Communications Information** dialog box.

## Parameters Tab

The Parameters tab displays configuration and general runtime information about the DQM Communications components.

Figure A-1 Comm. Information Dialog Box: Parameters Tab



No modifications can be made to the actual fields in the Parameters tab. To modify information shown in this tab, from the menu bar of the Teradata Scheduled Requests Operations utility, open the **Configuration** menu and select **Communications**. The **Communications Parameters** dialog box opens.

Table A-2 Information Dialog Box: Box Descriptions

<b>Box</b>	<b>Description</b>
Retries	Indicates the number of times the DQM Communications components retries system and network functions when a failure is encountered.
Free Msg Buffers	Indicates how many communications message buffers are currently available for use.
Memory Size (KB)	The communications shared memory size in kilobytes.
Free Memory (KB)	The amount of free communications shared memory in kilobytes.
Default Server Name	The default network node name of a remote DQM server system. This value is used if a client does not specify a server name when opening a new communications session.
Default Server Port	The default IP port number for a remote DQM server system.
Network Node Name	The name of the local network node if it has been used as a DQM server.
Network Node Address	The address of the local network node.
Listener Port	The IP port number on which the DQM Listener component accepts socket connections from remote client systems.  This value is specified during Server installation and is saved in the <system>\system32\drivers\etc\ services file.
Listener Process ID	The process ID of the DQM Listener process.

## Connections Tab

The Connections tab displays information about the physical and logical communications connections.

- The physical connections between client and server systems are managed by processes called routers. The router process that services the client end of a physical connection is a client router. The router process that services the server end is a server router.
- The logical connections between client applications and the DQM server are called sessions. On client and server systems, all sessions to the same remote system are handled by a single router process.

Figure A-2 Comm. Information Dialog Box: Connections Tab

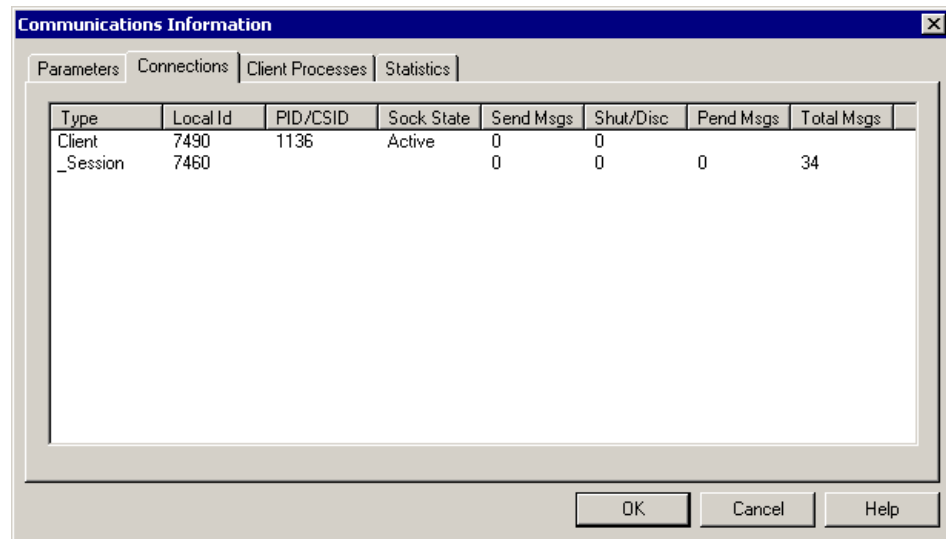


Table A-3 Information Dialog Box: Connections Tab Field Descriptions

Field	Description
Type	Indicates whether the connection is a client or server router process or a logical session.
Local Id	The hexadecimal identifier of the router or session on the local system.
PID/CSID	PID is the process ID of the main router process for the router types. CSID is the hexadecimal identifier of the client or server sessions.
Sock State	The state of the socket connection for the router types.
Send Msgs	Indicates whether there are messages ready to send over the session or socket.
Shut/Disc	Shut indicates whether there is a shutdown pending for router types. Disc indicates whether there is a disconnect pending for sessions.
Pend Msgs	The number of messages waiting for a response on the session.
Total Msgs	The total number of messages sent on the session.

## Client Processes Tab

The Client Processes tab displays information about the client application processes that have attached to the communications library. These are usually Scheduled Requests Viewer client applications.

Figure A-3 Comm. Information Dialog Box: Client Processes Tab

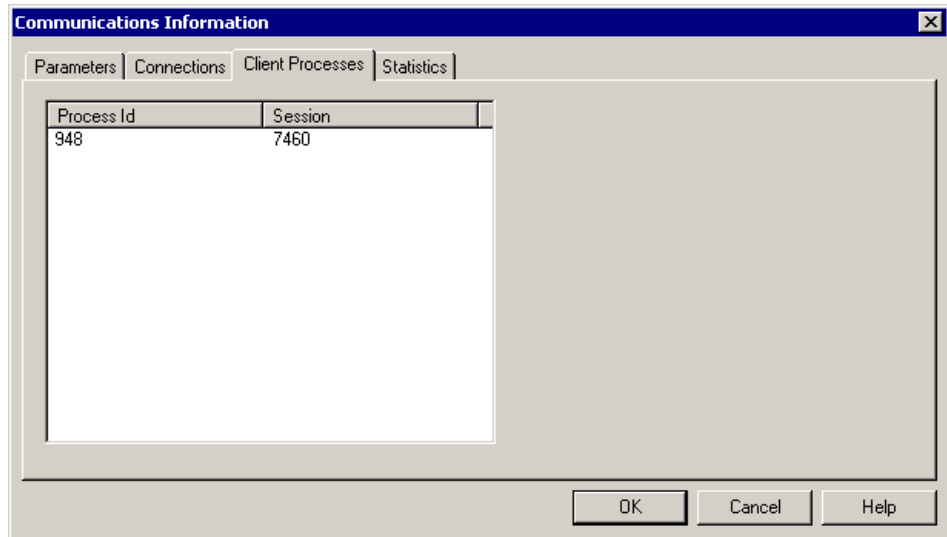


Table A-4 Information Dialog Box: Client Processes Tab Field Descriptions

Field	Description
Process Id	The process ID of the process that opened a client communications session.
Session	The session identifier of the session created for the process. Several sessions could be created by one client application process or thread.

## Statistics Tab

The Statistics tab displays information about the communications connections and the requests sent over the connections.

Figure A-4 Information Dialog Box: Statistics Tab

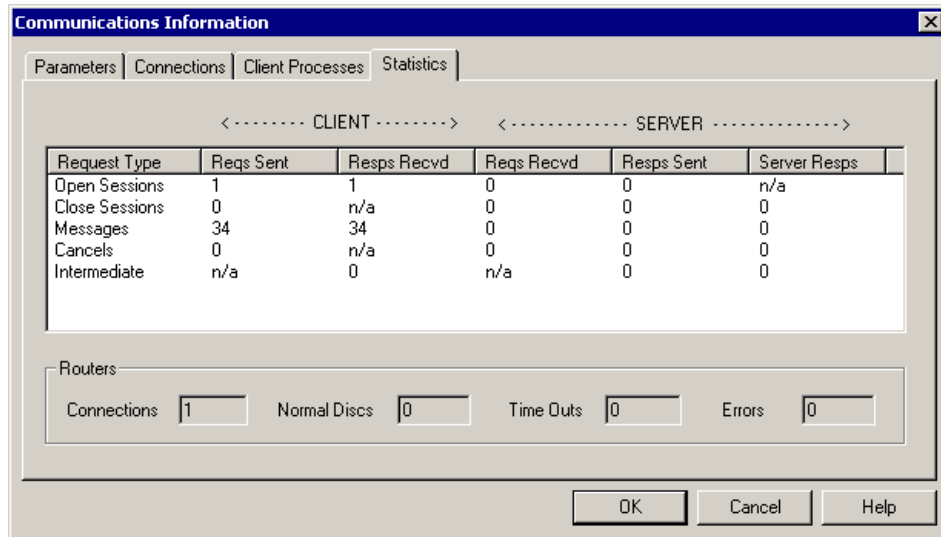


Table A-5 Information Dialog Box: Statistics Tab Field Descriptions

Field	Description
Request Type	The basic DQM communications request, or message, types.
<b>Client Statistics:</b>	
Reqs Sent	The number of requests of each type sent by client applications on the local system via the DQM client communications component. Because client applications do not send intermediate responses, that statistic is not applicable (n/a).
Resps Recvd	The number of responses of each type received by client applications on the local system via the DQM client communications component. Because client applications do not receive responses for cancel and close-session requests, those statistics are not applicable.
<b>Server Statistics:</b>	
Reqs Recvd	The number of requests of each type received by the DQM server communications component on the local system from local and/or remote DQM client communications components.
Resps Sent	The number of responses of each type sent by the DQM server communications component on the local system. The server communications component sends responses to the client communications component even if the client application does not receive them.
Server Resps	The number of responses of each type returned by the DQM server component to the DQM server communications component on the local system. The DQM server responds to each request it processes.
<b>Routers:</b>	
Connections	The number of communications connections on the local system.

Table A-5 (Continued) Information Dialog Box: Statistics Tab Field Descriptions

Field	Description
Normal Discs	The number of communications connections disconnected normally.
Time Outs	The number of communications connections disconnected because of a timeout.
Errors	The number of communications connections disconnected because of socket errors.





**Appendix B:**

# Configuration Parameters and Error Log Files

This appendix contains the following information:

- [Default Configuration Parameters](#)
- [TDQM Error Log Files](#)

## Default Configuration Parameters

The following table lists the names of the configuration parameters as they appear in the Windows registry.

Parameters that start with:

- **Com** are communication parameters
- **Cli** are client parameters
- **Srv** are server parameters (apply only if the system is being used as a DQM server)

Table B-1 Default Configuration Parameters

Parameter	Default	Description
ComShmSz	200	Communications shared memory size in kilobytes.
ComNMsgs	300	Number of Communications message structures to preallocate.
ComRetries	1	Number of times to retry network and system requests.
ComTracing	No	Trace Communications activity for debugging (normally <b>No</b> ).
ComSrvPort	3000	Port number of remote DQM servers. Used as the default when the client does not provide one.
ComSrvName (2,3)	None	Up to three network names or IP addresses of remote DQM Scheduled Requests servers. The first one is used as the default when the client does not provide one.
ComSysName	None	Network node name of the local DQM server on the network used by the client systems to access the server. Used to override the gethostname values.
ComSysAddr	None	IP address of the local DQM server on the network used by the client systems to access the server. Must be specified with the ComSysName parameter.
CliSRDialog	Yes	Schedule rejected Teradata SQL Assistant queries. Set to <b>No</b> to disable display of <b>Scheduled Requests Submit</b> dialog box.
CliTimeout	30	Seconds to wait for server response.
CliTracing	No	Trace client activity for debugging
SrvShmSz	500	Server shared memory size in kilobytes.
SrvReqPool	3	Number of processes for request processing.
SrvTracing	No	Trace server activity for debugging (normally <b>No</b> ).
SrvDbTdpid	DBC	Database logon tdpid.

Table B-1 (Continued) Default Configuration Parameters

Parameter	Default	Description
SrvDbName	Dbqrymgr	Database logon user name of the DQM database. Should always be <b>dbqrymgr</b> .
SrvDbPwd	Dbqrymgr	Database logon password for the <b>dbqrymgr</b> user. May be changed by the user (encrypted).
InstallPath	C:\Program Files\NCR\Teradata DQM	Location of the DQM installation directory
LogPath	C:\dqmllog	Location of the TDQM log directory for writing log and trace files (must be globally writable).
LogLevel	1	1 for log errors only or 2 for errors and other information.

## TDQM Error Log Files

The following tables give you information and describe the contents of your error log file.

The entries in the log file are described in Table 9-1.

Table B-2 TDQM Log - Entry Fields

Column	Description
Time	The time that the log entry was made in hhmmss format where hh=hour, mm=minutes, and ss=seconds.
Component	Abbreviated name of the Teradata DQM component or subcomponent when Teradata DQM logged the entry. The component identifiers used in the DQM log are: <ul style="list-style-type: none"> <li>• COMM - Communications</li> <li>• INIT - Main (initialization) server process</li> <li>• SRVR - Request processor server processes</li> <li>• DBMS - Database interface module</li> <li>• SRCLI - Scheduled Request client library</li> <li>• SREXE - Scheduled Request job executor</li> <li>• SCHED - Scheduled Request scheduler</li> <li>• DISP - Scheduled Request dispatcher</li> </ul>
Process ID	The process ID that logged the entry.
Function	Name of the function within the DQM code where the condition being logged occurred.
Activity	Description of the activity or interface called by the Teradata DQM function that caused the entry to be logged.
Status	DQM status value, or in some cases, the numeric value of a variable or a condition. See the following for the available status codes.
Errno	Current system error number for the process.
Message	A log entry may be followed by one or more lines of text. A text message is included when the logging of a status or <i>errno</i> value is insufficient, such as database errors.

### Component Field

The Component field identifies what component or subcomponent of DQM is making the log entry. The following component identifiers are used in the TDQM log:

Table B-3 TDQM Log - Component Identifiers

Identifier	Component
COMM	Communications
INIT	Main (initialization) server process
SRVR	Request processor server processes
DBMS	Database interface module
SRCLI	Scheduled Request client library
SREXE	Scheduled Request job executor
SCHED	Scheduled Request scheduler
DISP	Scheduled Request dispatcher

## Status Field

The statuses logged by DQM are listed in the remainder of this section, and are grouped by the component that logs them. There are some general statuses that can be logged by any component.

Table B-4 TDQM Status Field - General Status Descriptions

Value	General Status Description
0	General good status
99999	General failure status
50001	Invalid argument
50002	No memory available
50003	No semaphores available
50004	Bad semaphore operation
50005	Cannot put msg on queue
50006	Path or filename invalid
50007	Cannot start (exec) program
50008	Process terminated
50009	Server is inactive
50010	Server startup completed ok
50011	Server startup pending (initiated)
50012	Server startup required

Appendix B: Configuration Parameters and Error Log Files  
**TDQM Error Log Files**

Table B-5 TDQM Status Field - Communications Status Descriptions

<b>Value</b>	<b>Communications Status Description</b>
51001	Comm inactive (i.e., not started)
51002	No socket library
51003	No sockets available
51004	No host name specified
51005	Host name not found
51006	TCP service not found
51007	Socket connect failed
51008	Bad socket read
51009	Bad socket write
51010	Socket error
51011	Set sock option error
51012	Socket closed
51013	Interrupted socket read
51014	Invalid msg (bad key)
51015	Invalid msg (unknown msg type)
51016	Msg not found
51017	Cannot generate timestamp
51018	invalid session id
51019	comm listener terminated
51020	no response req'd - OK
51021	packet size mismatch
51022	product id error

Table B-6 TDQM Status Field - Server Vote Status Descriptions

<b>Value</b>	<b>Server Vote Status Description</b>
53000	success vote
53001	error vote
53002	warning vote
53003	bypass vote

Table B-6 (Continued) TDQM Status Field - Server Vote Status Descriptions

53004	cancel vote
53005	server down vote

Table B-7 TDQM Status Field - Server Rule Status Descriptions

<b>Value</b>	<b>Server Rule Status Description</b>
53100	no access rule
53101	no join rule
53102	query answer set size (rows) rule
53103	query processing time rule
53104	query spool size rule (not used)
53105	YNET usage threshold rule (no longer used)
53106	CPU usage threshold rule
53107	disk usage threshold rule
53108	network transit time threshold rule
53109	user logons threshold rule
53110	internal (software) error
53111	delayed queue max size exceeded
53112	delayed max time exceeded
53113	no scan rule
53114	retryable software error (i.e., database, UNIX resource, etc.)
53115	no scheduled request execution time frames available
53116	running query count threshold rule
53117	request already pending on session (software error)
53118	disk space threshold rule
53119	invalid request syntax

Table B-8 TDQM Status Field - Server Exception Status Descriptions

<b>Value</b>	<b>Server Exception Status Description</b>
53201	unexpected keyword (in parsed object list)
53202	unexpected object kind (in update table)
53203	unexpected operation (in update table)

Appendix B: Configuration Parameters and Error Log Files  
**TDQM Error Log Files**

Table B-8 (Continued) TDQM Status Field - Server Exception Status Descriptions

<b>Value</b>	<b>Server Exception Status Description</b>
53204	no objects specified (in update table)
53205	no SQL statement specified
53206	database error encountered
53207	object not found
53222	results table exists

Table B-9 TDQM Status Field - Scheduler Status Descriptions

<b>Value</b>	<b>Scheduler Status Description</b>
56000	successful operation
56001	general error occurred
56002	invalid id specified
56003	bad date value specified
56004	database error encountered
56005	password mismatch
56006	scheduling not enabled
56007	for cancel or delete job

# Glossary

## C

**Call-Level Interface Version 2 (CLIV2)** A collection of callable service routines that provide an interface to the Teradata Database. Specifically, CLI is the interface between the application program and the Micro Teradata Directory Program (MTDP). CLI builds parcels that MTDP packages for sending to the Teradata Database using the Micro Operating System Interface (MOSI), and provides the application with a pointer to each of the parcels returned from the Teradata Database.

## E

**error log file** A file containing a record of error conditions encountered by all DQM components on the system, and sometimes includes important events. It is a circular binary file of a fixed size that cannot be viewed with a text editor.

**execution time frame** A period of time when DQM can execute scheduled request jobs that are waiting to run.

## J

**job** In the DQM Schedule Request environment, a job is the individual execution of an instance of a schedule request.

## O

**Open Database Connectivity (ODBC) Driver** A driver that allows client applications written with Microsoft ODBC standards to access the Teradata Database.

## Q

**query management** The primary feature of DQM is to enable your DBA to manage logons and queries. The Query Management capability examines logon and query requests before they are dispatched for execution with the RDBMS, and may reject logons, and may reject or delay queries. It does this by comparing the objects referenced in the requests to the types of DBA-defined rules. For more information, see the *Teradata Dynamic Query Manager Administrator Guide*.

## R

**Relational Database Management System (RDBMS)** A database management system in which complex data structures are represented as simple, two-dimensional tables consisting of columns and rows.

**request** In the DQM scheduled requests environment, a request is the definition of the parameters and text associated with a schedule request.

**results table/file** In the DQM scheduled requests environment, a results table or file is a database table, or a Windows file into which DQM will store result data for a schedule request that is not self-contained.

**rule** Rules are the name given to the method used by DQM to define what requests are prohibited from being immediately executed on the Teradata Database. That is, the rules enforced by DQM provide the Query Management capabilities.

## S

**scheduled requests** The capability to store scripts of SQL requests and execute them to run at a scheduled time later.

**self-contained statement** A query request that stores the result data that it generates, if any. For example, an INSERT/SELECT statement would be self-contained, whereas a SELECT statement would not.

## T

**Teradata Dynamic Query Manager (Teradata DQM and TDQM)** The product described in this document, which manages access to the Teradata database.

**Teradata DQM Administrator Utility** An application used for establishing, monitoring, and administering DQM configuration and restriction parameters.

**Teradata DQM Scheduled Requests Operations Utility** A Windows application that allows a user to configure the scheduled requests client environment on their PC, view information about client parameters, connections, processes, and statistics, and examine TDQM error log files.

**Teradata DQM Scheduled Requests Viewer Application** A Windows application that allows the user to view the status of his or her scheduled jobs, view information about requests, submit new requests, cancel jobs, delete requests and jobs, and clean up results tables. The Viewer only provides information for the particular user that is connected to the DQM scheduled requests server.

**Teradata SQL Assistant** Previously known as Queryman, Teradata SQL Assistant is a Windows applications that enables users to issue SQL requests to the Teradata Database.

**tracing** This feature writes special debugging information to text files and is used when troubleshooting the system.



# Index

## A

About Teradata DQM Operations dialog box 4-12  
Account String text box 2-10  
acronyms iv  
architecture, client/server 1-4  
automatic scheduling of queries 2-2, 2-13  
Automatically cleaned up after box 2-12

## C

Cancel Job command 3-10  
changing  
    client configuration parameters 4-4  
    communications parameters 4-3  
character sets 2-4  
client  
    changing configuration parameters 4-3, 4-4  
    configuring parameters 4-10  
    default parameters B-2  
    processes 4-6  
Client Parameters dialog box 4-4, 4-10  
Client Processes tab  
    field descriptions A-4  
    introduction 4-6, A-2  
Command menu *See* menus  
commands *See* specific command names  
communications  
    changing configuration parameters 4-3, 4-4  
    communications information 4-11  
    configuring parameters 4-10  
    default parameters B-2  
Communications Information dialog box 4-11, A-2  
Communications Parameters dialog box 4-10  
Component field B-4  
components, DQM 1-3, 4-6  
Configuration menu *See* menus  
configuration parameters, changing 4-3  
connecting to DQM server 2-6  
Connections field A-6  
Connections tab  
    field descriptions A-3  
    introduction 4-6, A-2  
copyright information 3-17

## D

Daily button 2-10  
Database Name text box 2-11  
Database Options 2-11  
database table  
    retrieving job result data 3-13  
Database Table button 2-11  
Day text box 2-11  
DBC Name text box 2-6  
debugging 4-9  
default  
    configuration parameters B-2  
    database field 2-6  
Default Server Name field 1-6, A-3  
Default Server Port field A-3  
Default Server Port Number field 1-6  
Delete Error Log Files dialog box 4-8  
Delete Job command 3-10  
Delete Request command 3-9  
deleting  
    error log files 4-8, 4-12  
    jobs 3-10  
dialog boxes  
    About TDQM Scheduled Requests Viewer 3-17  
    About Teradata DQM Operations 4-12  
    Client Parameters 4-4, 4-10  
    Communications Information 4-6, 4-11, A-2  
    Communications Parameters 4-3, 4-10  
    Delete Error Log Files 4-8  
    Save Error Log Files 4-8  
    Scheduled Request Viewer Settings 3-16  
    Scheduled Requests Information 4-11  
    Server Information 4-11  
    Server Parameters 4-10  
    SQL Text 2-9  
    Teradata DQM Scheduled Requests Viewer  
        Connect 2-6  
    Trace Teradata DQM Activity to Files 4-9, 4-10  
    View Error Log File 4-7  
    View Error Log Files 4-7  
Disconnect command 3-18  
disconnecting from DQM server 3-18  
documentation  
    on the Web iv  
    related to DQM iii  
    technical support iv  
DQM

- client software components 1–3
- documentation, related to DQM iii
- installation directory B–3
- server, connecting to 2–6
- drivers
  - ODBC 1–5
  - TCP/IP 1–5
  - Token Ring packet 1–5
- Drop Results command 3–11

---

## E

- e-mail notification ii, 2–10
- Enable Client Tracing check box 4–9
- Enable Communications Tracing check box 4–9
- error log files *See* log
- Error Log menu *See* menus
- Errors field A–7
- Estimates box 2–10
- executing jobs 2–4
- execution time frames 2–3, 3–5
- exiting
  - Teradata DQM Scheduled Requests Operations utility 4–10
  - Teradata DQM Scheduled Requests Viewer 3–18

---

## F

- Fallback check box 2–11
- Field Separator box 2–12
- File menu *See* menus
- File Name text box 2–11
- files
  - configuration 4–3
  - dqmlog *See* log
  - installation B–3
  - trace B–3
  - writing log B–3
- Free Memory (KB) field A–3
- Free Msg Buffers field A–3
- Frequency buttons 2–10

---

## G

- gethostname values B–2

---

## H

- help
  - documentation iv
  - online help 3–17
  - technical support iv
- Help menu *See* menus
- Hour text box 2–11

---

## I

- information
  - communications 4–6
- Information menu *See* menus
- installation directory B–3

---

## J

- job ID 3–3
- Job Information command 3–14
- job list, refreshing 3–15
- job result data
  - retrieving 3–12
  - viewing 3–14
- jobs
  - canceling 1–3, 3–10, B–8
  - deleting 1–3, 3–10, B–8
  - dispatching 2–4
  - executing 2–4
  - result information 3–12, 3–14
  - status field B–8

---

## L

- Listener Port field A–3
- Listener Process ID field A–3
- Local Id field A–4
- log
  - dqmlog file 4–7, 4–9, 4–12
  - error log directory B–3
  - error log files 4–7

---

## M

- max. start time 3–3
- Maximum Start Interval 2–11

Memory Size (KB) field A-3  
 menu bar  
   Teradata DQM Scheduled Requests  
     Operations 4-10  
   Teradata DQM Scheduled Requests Viewer 3-4  
 menus  
   Scheduled Requests Operations  
     Configuration menu 4-9, 4-10  
     Error Log menu 4-11  
     File menu 4-10  
     Help menu 4-6, 4-12  
     Information menu 4-6, 4-11  
     Server menu 4-11  
   Scheduled Requests Viewer  
     Command menu 2-9, 3-18  
     View menu 3-15, 3-16  
 Minute text box 2-11  
 Month text box 2-11  
 Monthly button 2-10  
 Multiset check box 2-11

---

## N

Network Node Address field A-3  
 Network Node Name field A-3  
 new features i  
 Normal Discs field A-7

---

## O

Once button 2-10

---

## P

parameters  
   communications 4-3, 4-6  
   configuration 4-3  
   default configuration 4-3, B-2  
   server 4-3  
 Parameters tab  
   field descriptions A-2  
   introduction 4-6, A-2  
 password  
   default database logon B-3  
   TDQM Scheduled Requests Viewer Connect 2-6  
 Pend Msgs field A-4  
 PID/CSID field A-4  
 Process Id field, Client Processes tab A-5

---

## Q

Queryman *See* Teradata SQL Assistant

---

## R

Refresh command 3-15  
 rejected requests 2-2, 2-13  
 Reqs Recvd field A-6  
 Reqs Sent, Statistics tab A-6  
 request ID 3-3  
 request name 3-3  
 Request Name text box 2-10  
 Request Properties command 3-6  
 Request Type field, Statistics tab A-6  
 requests  
   deleting 3-9  
   rejected 2-2, 2-13  
   submitting 2-9  
 Resps Recvd, Statistics tab A-6  
 Resps Sent field A-6  
 Result Options box 2-11  
 results  
   dropping 3-11  
   file 3-12  
   retrieving job result data 3-12  
   saving 2-3  
   table 3-12  
 Retries field A-3  
 Retrieve Results command 3-12  
 retrieving  
   job result data 3-12

---

## S

Save Error Log Files dialog box 4-8  
 Save Results To buttons 2-11  
 saving  
   error log file 4-12  
   result data 2-3  
 Schedule SQL command 2-9  
 scheduled requests  
   checking 2-3  
   e-mail notification ii, 2-10  
   overview 2-2  
   Scheduled Requests command 4-11  
   submitting 2-9  
 Scheduled Requests Information dialog box 4-11  
 Scheduled Requests Viewer *See* Teradata DQM

- Scheduled Requests Viewer
  - scheduling
    - automatic 2-2
    - information 2-2
    - SQL 2-5, 2-9
    - submitting a request 2-9
  - Scheduling Frequency buttons 2-10
  - Send Msgs field A-4
  - server
    - configuration parameters 4-3
    - configuring parameters 4-10
    - connecting to 2-6
    - default parameters B-2
    - server information 4-11
    - server text file 3-12
  - Server Information dialog box 4-11
  - Server menu *See* menus
  - Server Parameters dialog box 4-10
  - Server Resps field A-6
  - Session field, Client Processes tab A-5
  - Settings command 3-16
  - shortcut menu 3-4
  - Shut/Disc field A-4
  - Sock State field A-4
  - software releases, supported i
  - Sort command 3-5
  - sorting columns 3-5
  - SQL Assistant *See* Teradata SQL Assistant
  - SQL scheduling 2-5, 2-9
  - SQL text box 2-10
  - SQL Text dialog box 2-9
  - Start command, server service 4-11
  - Start Days/Dates 2-11
  - Start Time 2-11
  - Statistics tab
    - field descriptions A-5
    - introduction 4-6, A-2
  - status bar, Viewer 3-4
  - Status field B-5
  - Stop command, server service 4-11
  - submitting a scheduled request 2-9
    - automatic cleanup 2-5
    - scheduled requests component 2-2
    - scheduled requests job queue 2-3
  - Teradata DQM Scheduled Request Viewer Connect dialog box 2-6
  - Teradata DQM Scheduled Requests Operations utility
    - changing configuration parameters 4-3
    - closing 4-10
    - component information 4-6
    - configuration files 4-3
    - configuration parameters 4-3
    - error log files 4-7
    - exiting 4-10
    - functions 4-2
    - menu bar 4-10
    - menus *See* menus
    - new features i
    - overview 4-2
    - starting 2-6, 2-9, 3-7
    - tracing
      - disabling 4-9
      - enabling 4-9
  - Teradata DQM Scheduled Requests Viewer
    - exiting 3-18
    - introduction 1-3
    - main window 3-3
    - menus *See* menus
    - overview 3-2
    - shortcut menu 3-4
    - starting 3-3
  - Teradata DQM Submit Scheduled Request dialog box 2-3, 2-9, 2-12
  - Teradata DQM View Scheduled Request dialog box 3-6
  - Teradata SQL Assistant
    - automatic scheduling queries 2-2, 2-13
    - configuration parameters B-2
    - retrieving results using 3-2, 3-12, 3-13
    - scheduling requests using 2-13
  - Text File button 2-11
  - time frames *See* execution time frames
  - Time Outs field A-7
  - Total Msgs field A-4
  - Trace Teradata DQM Activity to Files dialog box 4-9, 4-10
  - tracing
    - configuration parameters B-2
    - defined Glossary-3
    - disabling 4-9, 4-10
    - enabling 4-9, 4-10
    - tracing files 4-9
    - using 4-9
  - Type field A-4
- 
- T**
- Table Name text box 2-11
  - TCP/IP driver 1-5
  - tdpid B-2
  - TDQM error log files *See* log
  - technical support iv
  - Teradata DQM Administrator

---

**U**

Update button 2–10  
User Name text box 2–6, 2–10

---

**V**

version information 3–17  
View Error Log Files dialog box 4–7  
View menu *See* menus  
Viewer *See* Teradata DQM Scheduled Requests  
Viewer  
viewing  
    error log file 4–12  
    job result information 3–14  
    scheduled requests 3–3

---

**W**

Weekly button 2–10

---

**Y**

Year text box 2–11

